

Centerpiece

The Maui Arts & Cultural Center Magazine

December 2008 - January 2009



*Jake
Shimabukuro*

Jake, Keali'i & Uncle Willie

maui's faves are coming

FirstLight Film Festival

academy screenings on maui

Home: Inside & Out

roots run deep

RubberbandDance Group

twist and shout

Schaefer Portrait Challenge

putting your best face forward

Leon Fleisher

mister piano man

Gallery Views

off the wall

Behind the Scenes

what's goin' on



Kō

PLANTATION
INSPIRED
CUISINE

Experience the many flavors of
Maui's rich Plantation Heritage

For reservations please call
808-875-4100

The Fairmont Kea Lani, Maui
4100 Wailea Alanui
Wailea, Maui

THE *Fairmont*
KEA LANI
MAUI

Centerpiece

PUBLISHER

Maui Arts & Cultural Center

EDITOR

Corinne Domingo

FEATURE WRITERS

Sky Barnhart, Rick Chatenever,
Tom Stevens, Paul Wood

STAFF WRITERS

Leimomi Ah Sing, Corinne Domingo,
Colleen Furukawa, Barbara Trecker,
Lisa Varde

ADVERTISING INQUIRIES

marketing@mauiarts.org
243-4232

CONTRIBUTING

PHOTOGRAPHERS
Bob Bangerter, Aubrey Hord,
Art Vento

DESIGN & PRODUCTION

Robert Glick, Jon Graham
glickdesign.com

PRINTING

Spectracolor Hawai'i

Aloha...

With this December '08/January '09 issue of *Centerpiece*, we usher in a new look, a new year, a changed world...and the MACC's 15th birthday year!

This fresh new look for *Centerpiece*, its first redesign in 12 years, reflects the changes that have happened at the MACC and in the world around us during that time. In these dozen years, the MACC has become a leader in arts and culture not only on Maui but in the State, fulfilling its early promise to Maui's people. *Centerpiece*, once our only voice, is now the "crown jewel" among a myriad of ways to communicate, brought about by ever-changing technology—website, e-mail, text-messaging, desktop publishing, and more. (Ask your kids!)

For the past 12 years of excellent *Centerpiece* design, I would like to extend a heartfelt mahalo nui loa to Kari McCarthy and Design Network. We deeply appreciate her talents and all the passion she has put into the magazine. As *Centerpiece* moves on to a new era, we thank Kari and her team for helping the MACC share its voice through this, the magazine of Maui Arts & Cultural Center.

We are fortunate that Maui is truly *ka 'oi* in so many ways, including nurturing a deep talent pool of artists and designers whom the MACC has been honored to work with over the years—as an arts organization, we embrace many voices. We now welcome award-winning Maui designer Robert Glick, as he takes over the design helm for *Centerpiece*.

As for abundant artistic talent, come discover the gifted artists of Maui, Moloka'i, and Lāna'i, as well as O'ahu, Kaua'i, and Hawai'i Island, when the third Schaefer Portrait Challenge opens in January (page 2). The artists of Hawai'i share their passion, their vision, and the people they celebrate as they, and we, explore the richness of the many faces of Hawai'i.

The year that is coming to a close has been a tumultuous one. Let us hope that 2009 brings stability and peace to our lives, our economy, and our world. As the MACC begins to celebrate its 15th anniversary, we remain fervently committed to being "a gathering place" for people to come together around the things that we believe are fundamentally important—family, friends, education, community, and culture.



Karen A. Fischer
President & CEO
Maui Arts & Cultural Center

Contents

Schaefer Portrait Challenge

2

RubberbandDance Group

6

Leon Fleisher

8

Home: Inside & Out

10

Gallery Views

18

Behind the Scenes

28




Maui Arts & Cultural Center

Maui Arts & Cultural Center • One Cameron Way, Kahului, HI 96732
Phone (808) 242-2787 • Fax (808) 242-4665 • www.mauiarts.org • email:info@mauiarts.org
Box Office (808) 242-7469 © Centerpiece Magazine, 2008. All rights reserved.

View from A&B Amphitheater. Robert Glick photo.

Schaefer Portrait Challenge 2009



Face to Face

BY RICK CHATENEVER

Creating a portrait is all about holding still. But the Schaefer Portrait Challenge 2009 is all about movement...change...being alive.

In the jurors' selection of 56 portraits by 53 artists, the subjects "are people among us now," says MACC Exhibits Program Manager Neida Bangerter. "They're all living. When you walk through the doors, it's people looking at people."

Launched in 2003, followed by the second challenge in 2006, the statewide juried Schaefer Portrait Challenge invites its entrants to chronicle the changing face of our community.

But why a portrait?

In these times of "instant" everything — when time is measured in nanoseconds and your camera is as close as your cell phone — what is the thinking behind encouraging this most time-consuming, labor-intensive, and old-fashioned of arts?

That's the point, says Schaefer Gallery Director Darrell Orwig: slowing things down, making time for a relationship to develop. "Photographic images are so common," Orwig notes. A portrait, in contrast, is "a mindset that requires extensive interaction between the artist and the sitter."

Even for artists working from photos, the prospectus called for at least one live sitting. "That establishes a credible relationship versus a snapshot. There's continuity — it's not a drive-by shooting," he explains.

"It adds dimension, depth, personality, intrigue," adds Bangerter, (who, like Orwig, is also an artist in her own right.) "When you sit next to someone, you get their essence. Today, everybody has media overload. Everything is about me. This is about the subject."

That equation changes of course when artist and subject are one in the same. But even with a self-portrait, there's dialogue.

Sanit Khewhok calls his mixed-media self-portrait *The White Chair*. Formatted like the cover of a book, it shows the artist's pensive face against a white background in the top half of the canvas. A white chair sits below; it is empty.

"This work represents an examination of myself at this stage in my life," begins the artist's statement of the Thailand-born Khewhok, who also served as collections manager and conservator of the Contemporary Museum in Honolulu for two decades before budget cuts ended the position earlier this year.

"In the early years, I had many experiences painting portraits. While working on these projects I could see clearly as aspects of the sitters' personalities, but frequently the sitters saw themselves in a different light. For this reason, I chose myself for this portrait because I could be completely honest."

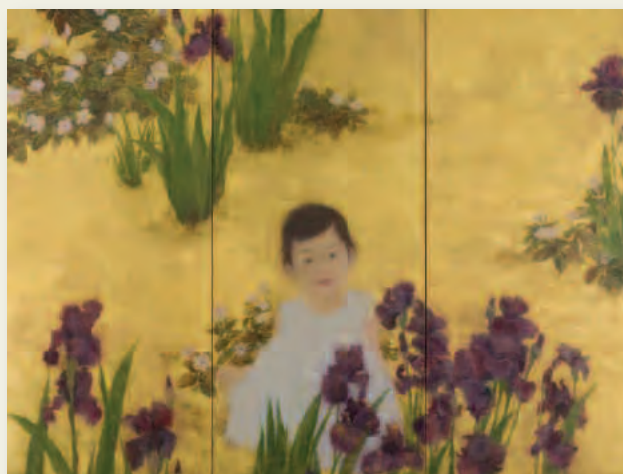
If a portrait can offer one artist a mirror, it can also reflect the way another artist is joined to her subject. In some cases, it records the life they share.

Artists Wendy Romanchak of Kula and Karen Goins of Honolulu both had works in the previous Schaefer challenge. In the interim, both women got pregnant and gave birth. In this show, their subjects are their children.

continued on page 4



The White Chair by Sanit Khewhok



Self Portrait (Mira: Iris) by Karen Goins

SCHAEFER PORTRAIT CHALLENGE 2009

January 6 – February 22, 2009

Schaefer International Gallery

Tues – Sat, 11 am – 5 pm

FREE

May 29 – September 8, 2009

The Contemporary Museum

at First Hawaiian Center

Honolulu

continued from page 3

Surrounded by purple orchids and green fronds, a young girl's face, as delicate as the flowers, stares out of Goins' triptych, gently snaring the viewer with her curious, trusting gaze.

"For the past two years, my daughter, Mira, has defined my existence," says Goins in her artist's statement. "Since becoming a mother, my view of the world has become significantly complex and how I reveal the world to my daughter has become my priority."

The portrait also shows the evolution of the Schaefer Challenge itself. In the inaugural exhibit, notes Bangerter, the subjects were

distinguished pillars of the community. Goins' portrait of her daughter, in contrast, points to the future.

Technical virtuosity and superb craft are definitely still criteria for being juried into the show. "There's a certain level of mystery and admiration the artists generate," says Orwig. "It's something other people can't do themselves."

But selections of this year's jurors — UH-Mānoa Hawaiian Studies professor Maile Andrade, Koa Gallery director David Behike of Kapi'olani Community College, Kaua'i artist A.

Kimberlin Blackburn

and UH-Hilo art professor Wayne Miyamoto — are more egalitarian, and sometimes surprising.

"They range from people who have made huge contributions to the community to a self portrait of a kid right out of rehab," says Bangerter.

Big Island artist Victoria Koningisor selected Daniel Kahikina Akaka Jr., cultural adviser at the Mauna Lani Resort, as her subject. On her canvas, in modern dress, he kneels amidst tree trunks at edge of a pool, calmly gazing out at the viewer. He extends his hand. A greeting? Not entirely. His hand draws your eyes down to his reflection in the pool. The reflection is a proud ancient warrior.



Daniel Kahikina Akaka Jr.
by Victoria Koningisor

Timing by Robert Suzuki



Reflect and Remember by Robert Suzuki

"The painting represents the three selves of this modern Hawaiian who has made of himself both a vessel and conduit for a culture that is unmatched in the depth and subtlety of its modes of spiritual expression," writes the artist. "The three selves are the Modern Man, his Shadow Spirit and his Reflected Ancestral Spirit."

The oil painting illustrates something else portraits can do that cameras can't make the unseen visible.

Unlike the belief among certain indigenous peoples that a subject's soul can be stolen by a camera, a portrait exists by mutual agreement between subject and artist. From the accuracy of the

likeness to every detail of the composition, the intent isn't to steal the soul, but to reveal it. Through the contrivance of a sitting, a portrait doesn't want to be merely realistic. Part Rembrandt, part X-ray, influenced like all creative activity in the islands by the natural alchemy of our environment, portraits are all about time. They are a moment. They are forever.

"The stories behind these paintings are pretty compelling...fascinating... funny," says Orwig.

If the portraits are about time, they are also space. Most of the paintings are set out of doors. As a group, the subjects are robust, active, many framed by indigenous foliage or the sea in the background. Some wear T-shirts, hula skirts, lauhala hats. For many, formal attire seems to consist of putting on their rubber slippers.

"It is the look of Hawaii," says Bangerter.

"A portrait of the place," nods Orwig.

Fittingly, in this hall of painted mirrors, the artists are not the only creators. Many of the subjects are captured making their own art, on a ukulele or a canvas or a nose flute or a hula mound.



continued on page 18

3rd Annual Maui 'Ukulele Festival

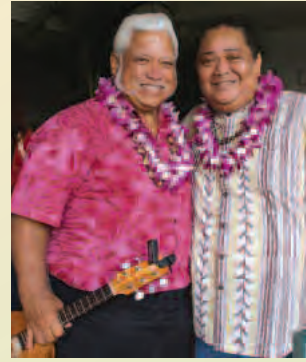
A & B Amphitheater
October 19, 2008



Giant 'ukulele created by Howard Lapp has become the icon of the festival!



MACC CEO Karen Fischer, Festival Directors Roy and Kathy Sakuma, MACC GM Art Vento



Richard Ho'opi'i and Uluwehi Guerrero



Paula Fuga



M.C. Roy Sakuma



The "D" (for dad) in Manoa DNA: Lloyd



Some of the winners of twelve beautiful 'ukuleles, valued at \$7,500!



Ohta San and Nando Suan play the classics



Maui County's Mahina Martin reads the Mayor's Proclamation of 'Ukulele Week



Hula by Uluwehi Guerrero's Halau Hula Kauluokala



A fun family festival day! Enjoying the music...and just hanging out!



...as the afternoon fades into evening





LATITUDES Furnishings for Life

Maui's Most Complete Design Center

▶ Latitudes - Kahului
210 Alamaha Street
Kahului, Maui, HI 96732
808.893.0650

▶ Latitudes - Lahaina
845 Wainee Street, Suite 100
Lahaina, Maui, HI 96761
808.661.5352

www.LatitudesInHawaii.com



Breaking

BY SKY BARNHART

The music is classical; the movements are graceful. Silhouetted in the spotlight, the dancers flow together so smoothly, for a moment you might think you'd stumbled into a ballet performance. Except for the sneakers.

RubberbandDance Group is swift to shatter any preconceived notions. A ballet moment can just as quickly shift into popping and locking, with the dancers working in and out of the spotlight, showing off edgy moves in a style that is anything but classical.



This is Victor Quijada's world: a melding of two very

different genres, hip-hop and contemporary ballet, into a diverse perspective that *The New York Times* has described as "post-hip-hop."

It's a tidy label, but as Quijada himself has admitted, his dancing defies such succinct packaging. That's because wrapped around the technical aspects — which are impressive; incorporating lifts, jumps, kicks, bends and breakdance moves — are the emotional aspects.

A man and a woman circle each other in the spotlight, then blend together, seamlessly rolling over and off each other's bodies, balancing each other's weight. He lifts her high over his head, as above a darkened mosh pit, her arms and legs splayed wide as he spins—and then slowly, slowly, she collapses down like dead weight over his shoulders.

This is the reason it works: Quijada is not just a "b-boy" (a devotee of hip-hop culture) he is also a student of human nature. His pieces tell stories of men and women, friends and enemies, joy and sorrow, gain and loss. Quijada understands the range of human emotion as only someone who has worked his way up from the streets can.

The American-born son of Mexican immigrants, Quijada started honing his moves in street dances when he was only eight years old. As a teenager, he threw himself into dance classes at Los Angeles County High School for the Arts, gaining a more disciplined foundation for his passion.

From late nights in L.A. dance clubs, Quijada progressed into the structured environment of choreographer Twyla Tharp's dance company. After three years, his ever-inventive spirit drew him to continue his explorations in a classical direction. He went on to work with ballet's Eliot Feld, before moving to Canada to join Les

Robert Glick

GLICKDESIGN.COM

designer of

BRANDING + LOGOS
WEBSITES + PDFS
PRINT COLLATERAL
ALL PRINT MEDIA
ILLUSTRATION
MACC CENTERPIECE

871.8000

RubberBoundaries

Is there a place where professional ballet and L.A. hip-hop can co-exist? Victor Quijada and RubberbanDance take us there.

Grands Ballets Canadiens de Montréal.

But throughout his dance evolution, Quijada maintained his “b-boy” identity. “I was a ballet dancer from 9 a.m. ’til 6 p.m., and then I was in the hip-hop clubs from 10 p.m. ’til 3 a.m.,” he told the *Santa Barbara Independent*. “So I kept those worlds very separate, and it was kind of killing me.”

In 2002, he threw off those constraints and pursued his own vision, fusing the two diverse styles into one body. The result is RubberbanDance Group, so named to reflect Quijada’s teenage nickname of “Rubberband” for his elastic abilities.

Based in Montréal, the group has quickly become the focus of international acclaim, performing at dance festivals from Jacob’s Pillow in Massachusetts to Bumbershoot in Seattle, as well as in Europe and Japan.

Maui audiences will get a taste of Quijada’s genius with “Elastic Perspective,” a compendium of pieces ranging from explosive hip-hop to contemporary musings; set to music that covers a similar array of styles, from salsa to spoken word.

Quijada is joined onstage and in life by Anne Plamondon, his partner who is also co-director of RubberbanDance. Plamondon brings



the classical discipline borne of years of training at L’École Supérieure de Danse du Québec, along with the expertise shaped by dancing the works of more than 30 choreographers. Backing up Quijada and Plamondon are a hand-picked collection of dancers from both classical and hip-hop backgrounds.

As a deep “Ommm” rolls across the dark stage, the male dancer executes sinewy breakdance moves...then rolls into meditation posture as the “Om” blends into a hard rap.

It’s beautiful and harsh at the same time; physical, edgy and deeply urban... an exciting glimpse of the dance “scene” that might otherwise escape us here in paradise.

RUBBERBANDANCE

Dance Series

Thursday, January 29

Castle Theater

7:30 pm

RESULTS through dedication...
...to her clients and to the Arts and Education.

Gerianne G. Sakamoto
REALTOR(S)
Accredited Buyer Representative
808-870-0411
ggs@maui-hawaii-homes.com
www.maui-hawaii-homes.com



TOP 100 REALTORS 2008

Island

Sotheby's
INTERNATIONAL REALTY

Each office independently owned and operated

Siganka
www.siganka.com

- SKIF Clothing
- Thai Cotton Clothing
- Alexis Bittar & Swarovski Crystal Jewelry Collections

Marsha Sabourin
808-283-6532
marshamermaid@mac.com



Two Hands:

Leon Fleisher



BY TOM STEVENS

Beethoven lost his hearing. Mozart lost his health. Leon Fleisher lost the use of his right hand. San Francisco pianist Fleisher is the luckiest of the three, because fate has largely reversed his loss...although it has taken 40 years.

In 1965, when the former child prodigy was 37 and at the height of his powers, he was stricken with focal dystonia, a rare neurological disease that silenced his right hand.

While it's possible to play concert-level piano left handed — as attested by numerous compositions for the left hand — that repertoire must have seemed incredibly limiting to a virtuoso who could blaze through Tchaikovsky, Liszt and Rachmaninoff with abandon.

But rather than judging his loss of ability a limitation, Fleisher told National Public Radio host Bob Edwards in 2006, he saw it as an unlooked-for opportunity.

“The whole adventure of trying to find an answer to the problem opened up no end of doors to me,” Fleisher recalled. “I learned conducting, I got further into teaching, and I looked for left hand repertoire.”

He also continued performing as a soloist, creating definitive interpretations of works for the left hand by Ravel and Britten. His situation also prompted modern composers like Curtis

Smith, Gunter Schuller and Lukas Foss to write pieces specifically for the left hand. Perhaps the most unique is William Bolcom's “Concerto for Two Pianos Left Hand,” composed for Fleisher and his friend Gary Graffman, who also suffered neurological damage to his right hand.

During his 40-year forced hiatus from two-handed playing, Fleisher was rarely idle. He studied conducting under maestro Pierre Monteux, directed the Kennedy Center's Theater Chamber Players, conducted the Baltimore Symphony and Opera, and served as music director of the Annapolis Symphony Orchestra and the Tanglewood Music Center. He also continued teaching piano students, a

sideline since at least 1959, when he joined the faculty of the prestigious Peabody Conservatory. There, and during subsequent tenures at the Curtis Institute and Toronto's Royal Conservatory of Music, Fleisher helped shape an entire generation of concert piano virtuosos, including Andre Watts, Lorin Hollander, Yefin Bronfman and Louis Lortie.

Through all this, Fleisher never suspended his search for an answer to the problem. That finally surfaced in the late 1990s, when a combination of botox injections and massage therapy gradually restored dexterity to the pianist's right hand. In 2004, at age 76, Fleisher celebrated his recovery with his first two-handed recording in more than 40 years.

Titled simply *Two Hands*, the critically acclaimed Vanguard Classics release prompted filmmaker Nathaniel Kahn to document the Leon Fleisher story. The resulting short film won an Oscar nomination in 2007. Vanguard Classics again featured Fleisher in 2006 on *The Journey*, a compilation of two-handed pieces the pianist had been ready to record in 1965 before he was stricken.

During the Bob Edwards interview, Fleisher was asked if the Botox therapy has enabled him to play two-handed now as well as he did 40 years

LEON FLEISHER, *piano*

Tune In Series
Sunday, January 25,
Castle Theater
5:00 pm

ago. The pianist's answer reveals the slyly self-deprecating humor that has made him a favorite teacher for hundreds of piano students.

"I can't play all repertoire, but the treatment enables me to do certain things, to play certain repertoire. So I have my limits, but I'm really grateful for what I can play. Of course, I'm also getting to that interesting point in my life where I'm asking: 'Is it the Botox, or is it the burden of the years which is preventing me from ripping off the Tchaikovsky Fifth Piano Concerto?'"

Regarding his age, Fleisher also quipped: "you don't see many octogenarians traipsing around Tchaikovsky concertos, or if you do, you give them urine tests."

*N*ow in his seventh decade as a performing artist, Fleisher presents 60 to 70 concerts a year and continues a recording career that dates back to the 1950s, when he teamed up with George Szell and The Cleveland Orchestra for a series of landmark LPs exploring signature piano works by Mozart, Brahms, Beethoven and Schubert.

In the last several years, Fleisher's concerts have raised hundreds of thousands of dollars for dystonia research and treatment, but that isn't what keeps him at the keys.

"What I'm most grateful for," he told NPR, "is the continued opportunity to make music with my friends and colleagues."

Fleisher also makes friends of his audiences. Unlike fans from the 1940s and '50s who marveled at his dazzling speed and technical brilliance, today's audiences appreciate what Fleisher's 40-year "journey" has brought to his soulful interpretations of the piano literature. "It's all in

BEETHOVEN LOST HIS HEARING.
MOZART LOST HIS HEALTH.
LEON FLEISHER LOST THE USE
OF HIS RIGHT HAND.

the journey," Fleisher reflects. "By this time I've learned that the achievement, the getting to the goal, has a certain satisfaction, but it's short-lived. We can enjoy the achievement for a while, but we're built in such a way that we want to get on to the next thing."

Maui fans can hear Leon Fleisher's next thing on at 5:00 pm Sunday, January 25 in the Castle Theater.

He'll be playing with two hands, so bring both ears.

Grand Wailea Resort Hotel & Spa
Proudly Supports Maui Arts


Grand Wailea Resort
HOTEL & SPA
Maui, Hawaii
The Waldorf Astoria Collection

Call 800.888.6100 or visit www.grandwailea.com

Next-generation Hawaiians

BY PAUL WOOD

The Hawaiian word kumu means foundation — literally, the trunk of a stout tree. A kumu hula, then, is a foundational figure of the culture, rooted in deep traditions, selected and trained by a master teacher and then publicly recognized in an ‘uniki ceremony, the equivalent of a priestly ordination. So when you call a kumu hula on his cell phone and you hear Damian Marley’s hip-hop/reggae song “All Night,” you get a funny little feeling that maybe the times are changing. Changing how? Answer: you can find out for yourself by attending a completely unprecedented, three-man, made-for-the-MACC production called *Home: Inside & Out*. Leave your hula-show assumptions at the door.

In fact, for Hawaiian culture, the times have always been changing. The culture evolved under tumbling skies, and in the last quarter century it has opened itself to the entire human world and survived the impact. The past 40 years have proven that it can take a knife in the heart and then stagger back up onto its feet, full of righteous anger and ready to move forward.

And now what? What of the youth, of the new kumu — the inheritors of the Hawaiian Renaissance in this digital world? What storms will shake their rooted branches, and what sun will they lean toward? What’s their soundtrack?

For three of them—the three age-30-ish, mixed-ancestry Hawaiian men who are creating *Home: Inside & Out*—this soundtrack includes the roar and honking of Honolulu traffic. Each of them lives on a boundary between tradition and innovation, a surging shoreline pounded by as much surf as they are willing to ride.

Two are kumu hula who had their ‘uniki ceremony together last August on the pā (hula platform) at the Maui Arts & Cultural Center. Their teacher is Hōkūlani Holt, the MACC’s cultural programs director. In fact, one of them, Lono Padilla, is Hōkūlani’s son, a Baldwin High School graduate who went on to get a degree in communications from UH-Mānoa. The other, Ke’ano (Robert) Ka’upu, is Hōkūlani’s “adopted” child — the proper term for this being keiki ho’okama, someone who is taken into a family at a time later than early childhood. Ke’ano hails from Hilo, so he too, like Lono, is an outer-island lad who has learned to adapt to big-city living on O’ahu.

So for them “home” feels in part like a lost physical location. In fact, for Ke’ano it has a name — Keaukaha, the Hawaiian homestead area in Hilo where his grandparents live. At his ‘uniki he performed the song “Kamalani o Keaukaha,” an expression of intense longing for his childhood environs. “I used to cry when I heard that song,” he says. “I missed home a lot, even though now I’m finding an identity I never had before.”

Starting from that emotional point, he and Lono began working out a new kind of performance that would transcend geography and nostalgia. *Home: Inside & Out* is about personal identity. It celebrates that inward horizon that each of us tries to keep in sight during times of rapid change.

Says Ke’ano: “We are Hawaiian people living in the modern day, doing things the ancients did as well as things our peers do —and still being able to coincide without disrespect. That’s the hardest part, to find a line you don’t cross. We don’t live in the past, and yet we can still be Hawaiian.

That’s what we are trying to do with *Home: Inside & Out*.”

It was Hōkūlani who provoked



the creative thinking that resulted in this performance. She went to her sons/students and simply asked, “If you could do something, what would that something be about?” When they started to formulate ideas — that it would not be a hula performance per se, that it would have dramatizations, creative movement, contemporary music, that it would blend the traditional and the new, that “it would be about their lives now”— she continued to apply friendly pressure. Working with The Center’s director of programs & administration Colleen Furukawa funds for *Home: Inside & Out* were raised through The Smithsonian’s National Museum of the American Indian Visual and Expressive Arts Program, which is funded by The Ford Foundation. Hōkūlani praises this program for going beyond mere reenactments of old forms, or “museum displays of what people used to do,” she says. “The Smithsonian is smart enough to know that native people evolve artistically. They’re willing to support projects that are not only about the past but also about how we bring that past with us into our future.”



To boost the contemporary feeling of the project and to add a wealth of music, the two kumu hula added a third collaborator — Chadwick Pang, a Ph.D. candidate in ethnomusicology at UH-Manoa. As a musician Chad straddles the same past-future divide that *Home: Inside & Out* explores. He was raised in Kalihi Valley by his grandfather, Rudolph Pang, who played Hawaiian music and jazz in the NCO clubs and Waikiki hotels of an earlier era. When Chad was 10, grandfather retired and moved to Portland, Oregon, where Chad grew up until 2001 when he returned to Honolulu at age 26. In short, he too has a story to tell about the loss of home. And even though he has managed to circle back to his pace of origin, he recognizes that the sense of loss is never quite redeemed. “Honolulu is a different place after a decade and a half. Ala Moana Center is not what I remember from my childhood.”

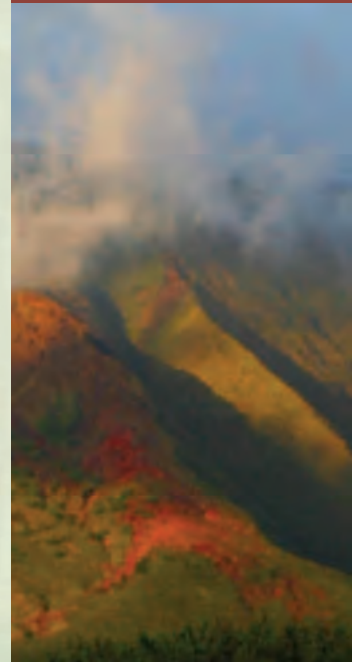
Chadwick’s score for *Home: Inside & Out* has grown into a fusion of effects. Besides paying homage to Hawaiian trio combos and older Island music styles, he has experimented with musical theater effects, modern sounds, hip-hop, reggae, and original compositions of his own. “For me there’s a dynamic between tradition and innovation,” he says. “It’s a tricky game, but I love it.” Like his partners, he is at a loss for a proper label to put on this production. “It’s not a play, not a concert. There’s a narrator. Characters give soliloquies and play multiple parts. There’s singing, chanting, dancing. It’s the first venture of its kind, and we are free to do what we want. That’s exciting.”

Hōkūlani, constantly caught up in her own cultural projects and productions, is delighted to step back and watch *Home: Inside & Out* come to life as a next-generation project. “This will give us a fresh look at the future of Hawaiian culture,” she says. “It is timely. A realization started in the early ’70s that people could take a stand and change things. We have helped our children to seek education and to stay connected with Hawaiian culture. Now we find these young men coming to an age when they need to ask, ‘What does all this mean to me?’

“They are what we worked so hard for. They are becoming what we had hoped. It’s out of our hands now. And that’s great! If we’ve done our job well, Hawaiian culture will keep moving.”



HOME: INSIDE & OUT
Local Voices Series
Saturday, January 31
McCoy Studio Theater
7:30 pm



LOOKING FOR A PLACE TO HANG YOUR
ART

Thinking about Buying or Selling Maui Real Estate?
CALL **ROAN BROWNE** REALTOR
Maui’s Upcountry & North Shore expert
283-3301 + roan@maui.net
View all listings at
www.MauiRE.net



Jim Sanders Realty, Inc.

ED LANE ∞

Studio visits welcomed. Please call:
(808) 875-0828

Also at:
HANA COAST GALLERY
MARTIN & MACARTHUR, SHOPS AT WAILEA
www.EdLaneStudio.com



Girl From Bora Bora

Celebrating Community & Creativity

Linking Artists and our Communities

Maui Arts & Cultural Center wishes to acknowledge the **County Product Enrichment Program (CPEP)** of Maui County's Office of Economic Development and **Hawai'i Tourism Authority (HTA)** for supporting MACC's free community performances held at various remote county locations. Support of the Kū Ka Maka project made it possible for excerpts of Kahekili to be performed at the Lodge at Kō'ele for Lāna'i's community on May 25, 2008 and for



Lakota Sioux Dance Theater at Lāna'i School

a mini-performance by the Lakota Sioux Dance Theater at Lāna'i School for the community on September 23, 2008. The Moloka'i community was able to experience the exhilarating performance of Aotearoa's Te Vaka on October 22, 2008. In addition, support was provided to MACC's annual Maui 'Ukulele Festival, a free family event held at the A&B Amphitheater for all to enjoy a day in the sun with music by community players and professional musicians. Mahalo to CPEP/HTA for helping to promote MACC's culturally enriching programs designed to benefit Maui Nui's community of residents and visitors.



Storytelling in our Classrooms

Sincere appreciation is extended to the **National Endowment for the Arts (NEA)** and their support of MACC's arts education project, Telling Our Stories, a storytelling venture with Waihe'e Elementary School (the first to participate in the project) and Pōmaika'i Elementary School. Students are learning how to incorporate methods of storytelling from Hawaiian folklore as well as from world cultures designed to develop critical literacy by using and integrating dance, music, drama and visual arts. Additional funding is also provided



by the **Rev. Takie Okumura Family Fund** of the Hawai'i Community Fund, a longtime advocate of Hawai'i's children and youth. Support from these organizations invests in the future of Maui's youth.



And a very sweet mahalo to Maui Soda & Ice/Roselani Ice Cream for the donation of ice cream as a treat for all participants at the conclusion of the performance. What a treat!

Hal Jobe, Angel

One of our very own MACC volunteers, Hal Jobe, was awarded the first ever "Nonprofit Angel" award at the 2008 Mayor's Small Business Awards on October 10. Hal serves on MACC's Maui Calls Committee



Lisa Varde with Hal Jobe

as the Décor Chair. His generosity knows no bounds, and he always goes the extra mile to do whatever is needed to ensure the success of Maui Calls. He gives countless personal hours of his time, gives financially, as well as makes inkind gifts of décor supplies, flowers, etc.

to make sure that our event is always first-class. In addition to his many hours on the Maui Calls committee, Hal is also a regular MACC usher, volunteering to help at dozens of performances throughout the year. From assisting wheelchair-bound patrons in Castle Theater, to picking up trash and recycling plastic bottles after reggae shows, Hal does it all with a smile – we marvel at his endless energy. Congratulations Hal! You are truly an "angel" to the MACC!

Completing Pundy's Dream

Maui Arts & Cultural Center is in the midst of a \$4 million capital campaign to "Complete Pundy's Dream." Longtime donors John and Linda Decker recently gave a generous gift to help support this important construction project. John says, "Linda & I have been supporters of MACC from the very beginning – literally from discussions with Colin and Margaret Cameron years before the building started – and I've served on MACC's Board. The current capital campaign is necessary to take MACC to the level we dreamed of all those years ago, so the decision to give was easy."

"What makes Maui 'Maui' is its cultural life," John continues. "There are a myriad of pretty islands with nice beaches, but only one Maui – and MACC plays an essential role in the island's cultural life."



Since it is so important to our community's life, the community needs to support it."

"The MACC is not just a fine venue – several quite different venues, actually. It's more a center and focus for the varied

cultural life of the Maui community. Even if Linda and I only participate in a few aspects – we prefer classical music to reggae, for instance – it is wonderful to be exposed to the whole scope of current cultural life which MACC presents," said John.

For more information on how you can help "Complete Pundy's Dream," call Birgitte Golden at 243-4279 or email bg@mauiarts.org.

Masters of Line

THE INSPIRED LINE:

Albrecht Dürer, Rembrandt van Rijn
- and -

CONTINUING LINES:

Jean Charlot, Paul MULLOWNEY, Artemio Rodriguez

Opening Reception September 7, 2008

Selected 16th and 17th century prints by Dürer & Rembrandt travelled through the centuries and over thousands of miles for the viewing pleasure of thousands of gallery visitors on Maui! This dual exhibit also featured contemporary artists, for another perspective on printmaking with religious themes. *Photos by Bob Bangarter.*



Karen Fischer & Heather Mueller



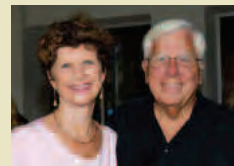
Sharon Coultrap, Jacob Mau



Casey Newman, Nancy Skrimstad



Kelly & Matt Thayer



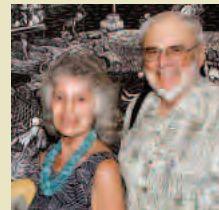
Diane & Ed Lane



Claudia Coonen, Claudia Johnson, Jusy Bisgard



L-R: Tony Wickey, Susie Byrne-Wickey, Sheila Hrast, Cathie Byrne, Eileen Wickey, artist Paul MULLOWNEY



Lois & Harvey Janis



John & Linda Decker, whose support helped make this exhibit a reality, look on as Gallery Director Darrell Orwig opens the first crate of priceless prints.



Kent & Polli Smith, with GM Art Vento and CEO Karen Fischer, were part of a group of donors who enjoyed a narrated walk-through of the exhibit!



Professor John Charlot, son of the artist in "Continuing Lines" exhibit, discussed his father's process and work in a public lecture.



Off the wall... This important exhibit was open to the public September 9 - October 19. During its run, the gallery staff conducted many special tours and related educational activities, to help the viewers gain insight and information on the works! Students from Kamehameha School were among those who learned about printmaking during "Artworks" tours.

December 2008

SUNDAY	MONDAY	TUESDAY	WEDNESDAY	THURSDAY	FRIDAY	SATURDAY
	1	2 Shoebox runs Tues-Sat thru Dec 13 	3 	4	5	6 Hōkū & Napua 
		SHOEBOX EXHIBIT >		SHOEBOX EXHIBIT >		
7 Maui Pops 	8	9	10 	11 Scott Thompson 	12 Neil Sedaka 	13 Willie K 
		SHOEBOX EXHIBIT >		SHOEBOX EXHIBIT ENDS		
14	15	16	17 	18	19	20 Peter Kater 
			The Maui Film Festival's Celebration of Cinema FIRSTLIGHT 2008			
21	22 	23	24	25 	26	27
The Maui Film Festival's Celebration of Cinema FIRSTLIGHT 2008					The Maui Film Festival's Celebration of Cinema FIRSTLIGHT 2008	
28	29	30 	31			
The Maui Film Festival's Celebration of Cinema FIRSTLIGHT 2008						

Dec 1-13 9th INTERNAT'L SHOEBOX SCULPTURE EXHIBITION, Schaefer Gallery Tue-Sat 11 am – 5 pm

Wed, Dec 3 & 10 Maui Film Festival: CANDLELIGHT CAFÉ & CINEMA Castle Theater, 5 & 7:30 pm

Sat, Dec 6 HŌKŪ ZUTTERMEISTER & NAPUA GREIG
McCoy Studio Theater, 7:30 pm
Two '08 Na Hoku Hanohano Award-winners: Best Male Vocalist & Best Female Vocalist on one stage!

Sun, Dec 7 "YEAR OF THE HULA" FILM FESTIVAL
McCoy Studio Theater, 3:00 pm
Ka Po'e Hula Hawai'i Kahiko (The Hula People of Old Hawai'i) plus special guest speaker

Sun, Dec 7 HOLIDAY POPS! Castle Theater, 3:30 pm
Start the holidays with good music and good cheer with Maui Pops Orchestra, Maestro Stuart Chafetz, and guest violinist Frank Almond.

Thurs, Dec 11 Coconut Cabaret: SCOTT THOMPSON
McCoy Studio Theater, 7:30 pm
"Scottastrophe": one-man comedy show by 'Kid in the Hall' Thompson & his lifelong love affair with catastrophe.

Fri, Dec 12 NEIL SEDAKA, solo piano
Castle Theater, 7:30 pm
A marvelous evening of timeless tunes and piano favorites with a prolific composer...man of a thousand songs!

Sat, Dec 13 WILLIE K Castle Theater, 7:30 pm
Amazingly talented singer & guitarist, along with the Kahaialii 'ohana, brings his own special magic to the Holidays.

Dec 17 – Jan 4 MAUI FILM FESTIVAL... FIRSTLIGHT FILM FESTIVAL Castle Theater
Academy screenings on Maui...Dozens of films! Schedules, film clips and synopsis at mauiilmfestival.com

Sat, Dec 20 PETE KATER, solo piano
McCoy Studio Theater, 7:30 pm
Multi-platinum pianist/composer whose broad creative stroke has touched millions of hearts around the world!

PERFORMANCE SPONSORS:



Office of Economic Development



Hawai'i Association of Music Societies
Performing Arts Presenters of Hawai'i

The Charles Engelhard Foundation
The Cole Family Foundation

The Smithsonian Foundation
The Ford Foundation



January 2009

SUNDAY	MONDAY	TUESDAY	WEDNESDAY	THURSDAY	FRIDAY	SATURDAY
						
						
						
						
						

SCHAEFER PORTRAIT CHALLENGE 09 CONTINUES THRU FEB 22 >

Jan 6 – Feb 22 SCHAEFER PORTRAIT CHALLENGE 2009
Schaefer Gallery, Tue-Sat 11 am – 5 pm

Wed, Jan 7, 14, 21, 28 Maui Film Festival: CANDLELIGHT CAFE & CINEMA Castle Theater, 5 & 7:30 pm
Weekly film titles TBA

Thu, Jan 15, 22, 29 FOCUS GREEN Lecture Series
McCoy Studio Theater, 6:00 pm
Environmental topics, sponsored by the Dowling Company.
Jan 15: Kevin Fletcher, Audubon Int'l; Jan 22: Mark Plotkin, Amazon Conservation; Jan. 29: Hunter Lovins

Fri, Jan 9 WARREN MILLER: CHILDREN OF WINTER
Castle Theater, 7:30 pm
Extreme winter sports film: electrifying cinematography, incredible global destinations.

Fri, Jan 16 Kathy Collins DEATH COMEDY JAM
McCoy Studio Theater, 7:30 pm
Maui's own broadcaster/comedienne gives her reflections on death, widowhood, and beyond...heartfelt, hilarious, and healing.

Sat, Jan 17 KEALI'I REICHEL with MAUI POPS ORCHESTRA Castle Theater, 7:30 pm
Keali'i teams up with Pops musicians in an all-new program!

Jan 19-20 SHANGHAI CIRCUS Castle Theater,
Mon 4 & 7 pm; Tue 7 pm Acrobats, balancers & contortionists in cirque nouveau costumes & staging...a magical world!

Sat, Jan 24 JAKE SHIMABUKURO Castle Theater, 7:30 pm
Lightning-fast fingers & revolutionary techniques...an 'ukulele virtuoso!

Sun, Jan 25 LEON FLEISHER, piano
Castle Theater, 5:00 pm
Legendary pianist, inspirational teacher and conductor with a remarkable life story.

Sun, Jan 25 Coconut Cabaret Comedy: TAYLOR MAC,
McCoy Studio Theater, 7:30 pm
A visual and vocal phenomenon known for his wit, wisdom and musical talents!

Thu, Jan 29 RUBBERBANDANCE GROUP
Castle Theater, 7:30 pm
Extraordinary dancers create fuse hip-hop and ballet in the pure joy of movement!

Fri, Jan 30 OZOMATLI Castle Theater, 7:30 pm
Distinctive West Coast blend of funk, hip-hop, Latino, reggae, ska.

Sat, Jan 31 HOME: INSIDE & OUT
McCoy Studio Theater, 7:30 pm
Three young Hawaiian men explore their roots through hula, music & narrative.

MEDIA SPONSORS:



Tickets

Tickets may be purchased by phone or in person at our Box Office.
 \$3 fee facility fee added to the purchase price of each ticket; other fees may apply.
HOURS: 10 am to 6 pm, Monday through Saturday. Also open three hours before Amphitheater show times, two hours before Castle Theater show times, and one hour before McCoy Studio Theater show times. Get Tickets Online! www.mauiararts.org

The Maui Arts & Cultural Center is located in Kahului at One Cameron Way, off Kahului Beach Road, across from Maui Community College parking lot. As a patron of the performing arts, please bear in mind that any event is subject to change or cancellation, sometimes with little or no notice. Please check the Box Office at 242-SHOW (242-7469) or www.mauiararts.org to confirm dates, times and prices.



The 'Space Cowboy' Setting Down on Maui! Saturday, February 28 • Tickets on sale now

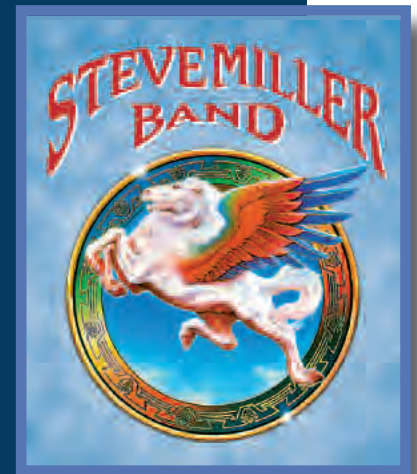
The Steve Miller Band will play the MACC's outdoor amphitheater on Saturday, February 28 at 7:00 pm, melding rock, blues, jazz and pop in its own inimitable, improvisational style for the first Maui-mega show in '09! Miller is flanked by icon harmonica player Norton Buffalo and an incredible line up of top-level musicians that make SMB one of the all time great Rock/R&B bands in history!

Re-live the hits: "Take the Money and Run" "Rockin' Me" "Jet Airliner" "The Joker" "Fly Like An Eagle" "Livin' in the USA" "Abracadabra" "Jungle Love"

Blues/rock singer-songwriter-guitarist Steve Miller is one of the cornerstones of classic rock. He formed his first band at age 12 with friend Boz Scaggs. Forty years and millions of records later, the Steve Miller Band is as fresh and vibrant as ever, attracting a fervent multi-generational audience!



Reserved seats are \$55, \$65, \$85, or \$125 premium... Available NOW to those in MACC annual donor program! (on sale to the general public Dec 13.) For tickets or to join the annual donor program and enjoy the priority benefits immediately, visit the Box Office, call 242-SHOW (242-7469), or go online at www.mauiararts.org.



MULLIGANS
 IRISH PUBS

LAHAINA
 Wharf Cinema Center 661-8881
 featuring satellite sports & late night music

WAILEA
 'Old Blue' Golf Course 874-1131
 featuring lively Irish & Rock rhythms with
THE CELTIC TIGERS
 Saturdays & Sundays 6:30 - 9:30 pm

listen: cdbaby.com/cd/celtic_tigers

**MMMMMAUI'S
 BEST COFFEE!**

Come in and taste it for yourself.

MAUI COFFEE ROASTERS

444 HANA HWY • KAHULUI • HI • 96732 • (808)877-2877 • WWW.HAWAIIANCOFFEE.COM

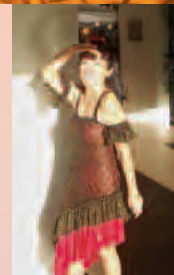
Volunteer Recognition and Awards 2008

Yokouchi Founders' Court
September 23, 2008

The annual Volunteer Appreciation Event was held September 23 to honor some of the legions of faithful MACC volunteers who have collectively contributed more than 190,000 hours in service over fiscal year 2007-08. This evening was in special recognition of those volunteers who gave 100 hours or more of their time to MACC in this past year. This year's theme was particularly festive with a FIESTA! theme, carried through in the decor, food, costumes and activities. Ole! Photos by James Kent and Neida Bangerter.



Dean Wong and conga line



Kathy Collins, MC



Honey Bun and Jimmy Haynes with Karen Fischer



Travis Thompson and Kathy Halpin with Leo Agcolicol



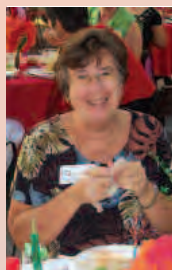
Earlyn Ginoza



Lois Wylie and Dan Schiessler



Larry and Louise Martin



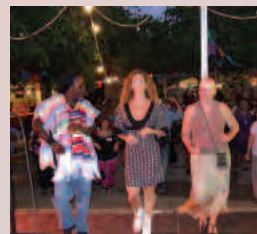
Connie Michaud



James Kent



Robbie Overvold and Jane Chenoweth



Samuel Charles with dance partners



Dr. Nat and Rio Ritmo



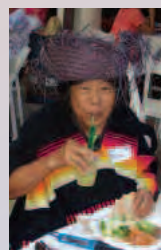
Mexican hat dance



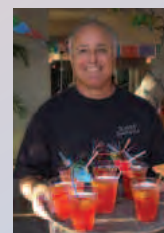
Mae Omuro



Festive Cantina Scene



Mabel Domae



Jack Naiditch



Naomi Tomura and Lani Scott



Whitey, Tom Kane and David Shaw



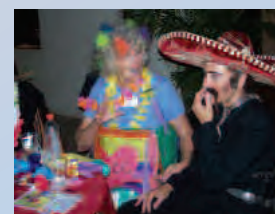
Costumes!



Alice and Tom Nakagawa



Barb and Rick Hackendahl



Donna Ponce and Gail Pickhol



Maui County Fair Parade October 2, 2008

Hold that banner high! True to form, MACC volunteers again marched in the annual Maui County Fair parade and carried event banners to promote the Center's outstanding season of coming events. With the longest contingent of marchers, we needed our own "Parade Marshall"... so house manager Dean Wong was there to beat the drum and set the pace!



continued from page 3

Reflect and Remember, Robert Suzuki's portrait of Ivan Komoda, surrounds the subject with six block prints of the orchids he lovingly cultivates here on Maui.

And in his effort to capture Bob "Ole" Olson in his portrait *Timing*, Lahaina artist Charlie Lyon sought an adequate way of portraying the pioneer in surfboard design and construction since the 1940s, who is still too modest to include himself among the legends of the sport. Growing up knowing Olson, artist Lyon writes that he was also compelled by "his aged and creased face...the look all artists have during the creative process, the look of intensity tinged with a touch of frustration." When Lyon approached his subject with the concept of a portrait, Ole not only gave it his approval. He also provided the medium on which to paint it: one of his abandoned surfboards, on which he inlaid his trademark.

One portrait. Two signatures. One shared commitment...to face the Challenge!

SCHAEFER PORTRAIT CHALLENGE 2009

January 6 – February 22

Tuesday – Saturday, 11 am – 5 pm

FREE! admission.

AWARDS

Jurors' Choice Award for \$15,000, graciously sponsored by Jack & Carolyn Schaefer Gray, will be chosen by an expanded jury committee.

Marian Freeman People's Choice Award for \$5,000, sponsored by Gage Schubert, will be awarded to the artist who receives the most votes by gallery visitors during the exhibition period at MACC.

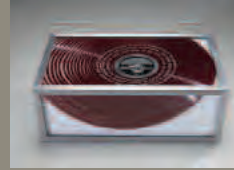
Maui Teacher of the Year



Bobbie Kokx with Sharon Castile

Congratulations to Bobbie Kokx who is Maui District Teacher for 2009. Bobbie has been teaching 3rd grade at Kihei School since 2000 and participating in the arts education professional development program at MACC since 2003. We are delighted to note that she has a Level II Certificate of Study award for completing 64 hours of workshops in using drama, music, visual arts, creative writing, and dance in her teaching. Bobbie was a teacher-researcher in the 2004-06 "Improving Writing through Image Making" project at Kihei School – the results demonstrated that arts-integrated teaching helps students improve core skills. She is also one of only 161 teachers in the State of Hawai'i who is a National Board Certified Teacher. Bobbie is famous at Kihei School for her sense of humor and devotion to her students.

Gallery Views



Patrick Hall
Australia
Flight Path, 2005
33 1/3 R.P.M. Long Playing
Record, aluminum, glass



Tran Ngoc Anh
Vietnam
After War... 2005
soldier's helmet,
wood



Cade Roster
Honolulu, Hawai'i
Interlocutor, 2005
mixed media

9TH INTERNATIONAL SHOEBOX SCULPTURE EXHIBITION

through December 14

Schaefer International Gallery

Tuesday – Saturday, 11 am – 5 pm

FREE! admission.

This popular exhibit featuring dozens of small sculptures from around the world, shows how artists have handled the challenges of space and scale dictated by the size of an ordinary shoebox. Organized by the University of Hawai'i Art Gallery.



Wailea Point Realty
"Live unlike you've ever lived before"

- ♦ *New Listings*
- ♦ *The finest locations*
- ♦ *Great Prices*
- ♦ *Beautifully remodeled*
- ♦ *Unparalleled luxury*
- ♦ *Stunning views*



www.waileapoint.com



Wailea Point
Hawaii's Finest Condominium



Dave Wagner—Principal Broker

Direct: 808-874-8801

Judy Gray—Broker in Charge

Office: 808-879-7233

Direct: 808-283-2666

Government, Foundation & Business Support

Special Thanks for Major Support:
Council for Native Hawaiian Advancement
County of Maui

Hawai'i State Foundation on Culture & the Arts
Hawai'i Tourism Authority
National Endowment for the Arts

Office of Economic Development – County Product Enrichment Program
Robert Emens Black Fund of the Hawai'i Community Foundation
State of Hawai'i

Gifts \$20,000 and over
Central Pacific Bank

The Harry & Jeanette Weinberg Foundation
John F. Kennedy Center for the Performing Arts

Gifts over \$10,000
The Charles Engelhard Foundation
Smithsonian/National Museum of the American Indian

Sandalwood Club

Arimathea Fund of Tides Foundation
Fine Wine Imports
Grand Wailea Resort Hotel & Spa
Hawaii Fire Fighters Association
HEI Charitable Foundation /
Maui Electric Company, Ltd.
JD Painting & Decorating, Inc.
Maui Chemical & Paper Products
The Maui News
Maui No Ka Oi Magazine
Mid Atlantic Arts Foundation
Service Rentals & Supplies, Inc.
Spago

Koa Club

AHS Foundation
Auntie Pasto's & Dixie Grill
Bendon Family Foundation
Cafe O'Lei
Classic Resorts, Ltd.
Crockett & Nakamura
Eclipse Foundation
Fairmont Kea Lani Maui
Koch Foundation
Koho Grill & Bar
Lana'i Community Benefit Fund
Maui Printing Co.
Maui Rents & Sales
Merriman's Kapalua
Pacific LightNet Communications
Rev. Takie Okumura Family Fund
of the Hawaii Community Foundation
Sunset Tropicals
Surf Rents Trucks
Valley Isle Produce, Inc.
Western States Arts Federation

Naupaka Club

Armstrong Foundation
Intouch Facial & Body Care
Maui Industrial/Metal Fabricators
The Michael S. Engl Family Foundation
Ohana Steel Buildings, INC.
Performing Arts Presenters of Hawaii
Queen Ka'ahumanu Center
Structural Concrete Bonding & Restoration, Inc.

Maile Club

AT&T Mobility
Capezio/Ballet Makers Dance Foundation, Inc.
Credit Associates of Maui, Ltd
Dowling Company, Inc.
The Gillette Foundation
JECO Air Conditioning & Sheetmetal
Jhamandas Watumull Fund
The Jonathan Starr Foundation
Kilakila Employer Services
Kitagawa Towing
Mancini, Welch & Geiger LLP
The Mark & Debi Roling Charitable Foundation
Maui Beach Hotel
Maui Coast Hotel
Mulligan's on the Blue
New England Foundation for the Arts
R.E.A.P. Foundation, Inc. Richard & Lynne Buckley
SpeediShuttle LLC
Tri-Star Restaurant Group

Silversword Club

Financial & Investment Mgt. Grp., Ltd.
Hawaii Coconut Protectors
Marco's Grill & Deli
Maui Marble and Granite
Orchids of Ollinda
Security Investment Associates
Truss Systems Hawaii, INC.
The Westin Maui Resort & Spa

Kukui Club

De Stefano Wealth Management
Hawaii Meeting Builders
Interstate Maui Realty
John Pierres Studio
Maalaea Bay Rentals
Maui Chamber of Commerce
Maui Economic Development Board, Inc.
Maui United Way
Maui Wedding Cakes, Inc.
Nana Enterprises
Shore to Shore Realty, Inc.
Tanikai, Inc.
Volcano Sign

'Ohī'a Club

Apache Painting, Inc.
Dick's Fumigation Services, Inc.
Dolphin Realty, Inc.
Four Seasons Resort Maui
Integrated Movement Systems, Inc.
Island Hair Creations
Island Spirit Yoga
John Henry Photography, Inc.
KV Performance & Repair
Leimer Cross Design
Matsuyama, Niwao & Associates, CPAs, A.B.C.
Maui Plastics
Maui Specialty Chocolates
Maui To Go Arts & Crafts
Mike & Sheryl Eddy, Realtors
Pacific Radio Group, Inc.
Padilla Designs, LLC
Proteas by Ken
Pumas Inc.
Rainbow Rentals
Sam Sato's, Inc.
Scuba Shack
Sterling Silver Productions
Suigeneris Services
Surfing Goat Dairy
Takamiya Market, Inc.
Truck & Industrial Supply
Two Mermaids on Maui B&B
Vanni Builders LLC
VRT Entertainment
Water Controls, Inc.

'Ilima Club

Pupu Lounge Seafood & Grill
Starwel Group
United Auto Parts, Inc. (Napa)

Matching Gift Donors

Aetna Inc.
Alexander & Baldwin
Bank of America
The Boeing Company
Eli Lilly and Company
ExxonMobil Corporation
Hewlett-Packard Company
Maui Land & Pineapple Company, Inc.
Monsanto Fund

Annual Donors

The Maui Arts & Cultural Center is grateful for the support of each individual listed. This list reflects the names of our annual donors the names our donor names as of October 1, 2008. Please let us know of any error with your listing by calling 243-4225.

Kauia Club

Jim Sanders & Colleen Cochlin
Cathy Tai, BJB Charitable Trust

Sandalwood Club

Eric & Tracy Aanenson
Anonymous
Mr. & Mrs. John C. Baldwin
Mr. & Mrs. Peter Baldwin
Mr. & Mrs. Bruce Chandler
David & Maggie Cole
Mr. & Mrs. Louis C. Cole
Frances & Robert Davidson
Mark & Julie Houck Gilliland /
Arthur's Limousine Service
Michael & Susan Graham
Leslie Granat Foundation
Kevin & Cheryl Hafer
Jimmy & Honey Bun Haynes
Mitch Jenkins
Mr. & Mrs. Dorvin D. Leis
Karen E. Levy
Mr. Robert J.
& Dr. Mary Lou Morgado
Jack & Carolyn Schaefer Gray
Mr. & Mrs. Richard Small
Mark Whiting
Yokouchi Foundation
Mr. & Mrs. Bill Zellerbach

Koa Club

Tamara & Eric Barto
Nancy J. Callahan
Ms. Anne Carter
Scott Dean & Ron Calvert
Noel Coon
Dr. & Mrs. John A. Decker, Jr.
Roy Dunn
Mr. & Mrs. C. Pardee Erdman, Jr.
Ed & Auriol Flavell
Barbara & Michael Gartner
Goodfellow Bros., Inc. -
J. Stephen Goodfellow
Shep & Renee Gordon
Bill Gresham & Patty Tracy
Alexa Higashi
Mr. & Mrs. Lawrence P. Hughes
Mr. & Mrs. Robert Knourek
Bob & Kay Lloyd
Audrey MacLean & Mike Clair
Mick & Cindy McCaffrey
Gary & Deb Michalchuk
Michael Moore
Andy & Jodie Pells
Chimen Podrat
James Smith & Linda Smith Caires
Joseph Sugarman
Mr. Chuck Virtue
Mrs. Gordon Von Tempsky
David W. & Karen S. Williams

Naupaka Club

Norma Badoyen & Guy Shimabukuro
Michael & Kathy Borelli
Mr. & Mrs. Richard F. Cameron
Tom Cherry & Tricia Shoemaker
Jeffrey & Heather Droad
Zora Durock & John Buck

Dennis & Carollyne Fill
Richard & Mumei Frunzi
Nancy & Hamilton Harris
Wayne & Kim Hikiji
Leona & Steve Holaday
Ken & Bev Kurokawa
Mrs. Mette W. Lyons
Jack Naiditch
Robert & Linda Nelson
Mr. & Mrs. Kent Smith
Wil & Melody Somoaogang
Patricia Steele
Karl Uesugi
Jim Wagner
Mrs. Jo Werner
Ms. Lisa Werner
William C.N. & Lucy Wong
Ms. Leslie-Ann Yokouchi
Mr. & Mrs. Herbert Yuen

Maile Club

Ron & Joyce Allred
Anonymous (3)
Betty & Wendell Arnold
Anita Arsenaunt
Edward & Sally Baldwin
Howard & Toddie Barbarosh
Samana Benedetti
Mr. & Mrs. Edward Benninger
Richard & Rachel Berman
Mr. & Mrs. William Bisgard
Dave & Corine Breiwick
Zadoc & Hilary Brown
Cynthia & Bruce Burkitt
Mr. & Mrs. Robert E. Caldwell
Bill & Laura Cameron
Philip C. Carr
& Mrs. Jeannine Carr
Robert & Tess Cartwright
Susannah Christy
& Chuck Pezzillo
Mr. Robert Cole
Janet Cooper
Margaret Coulombe
Scott Crockford
& Vanessa Kina
Ms. Geraldine deBeer
& Mr. Jonathan Finer
Debbie Dennison
Mr. & Mrs. Lee Dirks
Mr. & Mrs. Jeff Ellison
Mark & Judith Ellman
Jerry & Susan Embree
Tony & Thea Engesser
Tim & Sara Farrington
Craig & Johanna Furtado
Ms. Sherry Gabriele
& Mr. Mori Fils
Gus & Julie Gianulias
Denise Recchia Goodfellow
& Chad S. Goodfellow
Mr. & Mrs. Michael Green
Mr. & Mrs. John Hara
Hermine Harman
& Andrew Grabow
Mr. & Mrs. Alden Harris
David & Shirley Hartley
Peter & Pat Haug

Dana & Dale Hesse
Wes & Diane Hickey
Robert & Cindy Hill
Catherine & Donald Hurlock
Jaki Ives
Deborah James
William & Riette Jenkins
Ann Jones
Meagan Ann & Allen Jones
Lisa & Jim Judge
Ronald & Bonnie Kos
Darlene Levy
Marianna & Al Little
Peter Longhi
Helen & Roger MacArthur /
Wailea Realty Corp.
Barclay & Kathleen MacDonald
Peter & Deborah Martin
Mr. Michael McGuire
Earl Keith McKeague
David & Jan McKinley
Richard & Judith Michaels
Steve & Billie Moksnes
Mr. & Mrs. Colin Moreton
Cecil & Patti Morton
Barbara Mosle
& John Kahawaii
Leo & Beverley Nikora
Richard Nishihara
& Phyllis Nakamura
Mr. & Mrs. R. Daniel Omer
Helen S. Percy, M.D.
Doug & Wendy Peterson
Mr. & Mrs. Guy Pinkerton
Lemoine & Foster Radford
Mr. & Mrs. Mark Ramsey
Henry & Sandy Rice
Bob & Carolyn Richardson
James & Monica Sadler
Edy & Gary Salenger
Richard & Sheila Schlesinger
Budd & Ann Shenkin
Carl & Sandy Shimabukuro
Grant Shoemaker
William & Cindy Simon
Mr. & Mrs. Pete Siracusa
Cynthia P. & Stephen E. Smith
Joe & Pam Soldwedel
Mr. & Mrs. Michael Spalding
Mr. & Mrs. Robert Suzuki
Mr. & Mrs. Ed Takayasu
Charles Thieriot
Mr. & Mrs. Travis O. Thompson
Cathy & Maynard Torchiana
Sharon & Thurston Twigg-Smith
Kris & Katarina Vadla
Mr. & Mrs. Arthur Von Thaden
Paul & Judi Warren
Garry & Donna Weber
Ann Marie & Jack Wilder
Mr. & Mrs. Thomas Wittenbrock
Jim & Kathy Worley
Martin & Debbie Wyand
Mrs. Anna Wynn
Dwight & Kay Yamada
Mr. John Yurick
& Mr. Keoni Sumile

continued on page 20

Annual Donors

continued from page 19

Silversword Club

Mr. & Mrs. David A. Alpert
Jeanne A. Anderson
Alan & Carol Arai
Michelle & Jeremy Baldwin
Wendy Baldwin & Patrick Dixon
Mr. & Mrs. Bob Bangarter
Ben & Patti Berry
Mr. & Mrs. Geoffrey Bourne
James W. Bowman
Mr. Paul Brown & Ms. Trisha Grimley
Mrs. Carol Burdick & Mr. Edward Wulfkuehler
Mr. & Mrs. Jeremy Butler
Herman J., Jr. & RoseMary Calasa
Helen Christman
Robert & Carol Coe
Mr. & Mrs. Boyd Deel
Debbie DeMello
Scarlett & Tim Deshong
Dan & Marcy Eastham
Richard Echlin
John & Leontina Elder
Christian & Jacqueline Erdman
Nancy & David Fairclough
Dr. & Mrs. Charles Fein
Ms. Karen Fischer & Mr. John Eckhart
Beverly & Joel Greenfield
Mike & Loretta Gresham
Mr. & Mrs. Charles Guard
Norm & Diana Hageboeck
Eric & Elaine Hahn
Ted & Zelle Harders
John Hardwick & Ral West
Kenneth & Desiree Hayo
Jim & Mary Hirschfeld
Mr. & Mrs. Frank Hook
Robert & Jean Hoy
Billy Jalbert
Lance James
Barbara & Wilkens Kauuamo
Paul & Robin Kaiser
John & Susan Kean
Mr. & Mrs. Edward Lane
Edward & Maya Manley
The Catering Company - Allen Mann
Mr. & Mrs. William Marrs
Mr. & Mrs. Donald Marsden
Dick & Donna McCullough
Joan McDonald
Mr. & Mrs. Douglas McLeod
Francene Mertins & Herman Siegel
Ms. Suzette Metcalfe
Maybelle Moore
Jean Morrissey
Jack & Lyn Muegge
Randolph Mulkey
David & Grace Murata
Don & Joy Nelson
Mr. William M. Newport
Dean & Michelle Otto
Nan Parks
Allen & Christina Prestegard
Leilani Pulmano & Gary Bulson
Craig & Teena Rasmussen
Hans & Elvira Riecke
Thurston Robinson
Charles & Jennifer Rose
Dr. Dennis Row & Dr. Susan Stewart
Dennis Rush
Anthony & Sydney Sagabaen
Mrs. Mary Cameron Sanford
Dan Sayles & Wendy Styer-Sayles
Ron & Peggy Schecter
Jon & Suzanne Schlobohm
Charles Schneider
Karen Schultheis & Craig Lofton
Tim & Cindy Shannahan
Philip & Jo Ann Stevens
Dr. & Mrs. Russell Stodd
Mr. & Mrs. Clay Sutherland
David & Karen Temple
Lili Townsend
Mike Trotto & Adele Heide
Gunars & Jouene Valkirs
Mrs. Malia Vandervoort
Mrs. Louise R. Varnas
Carla Vasquez
Dan & Bella Whelan
David & Barbara Williams
Ms. Jerielle Young & Ms. Wendy Walsh
Roland Zeiter

Kukui Club

Leroy & Frances Kalikolehua Abbott
Mr. & Mrs. Masaru Abe
Del Adlawan & Sharon K. Heritage
Jerry Aguirre
Richard & Brenda Albright
Bob & Ann Alexander
The Rev. Kealahou Alike
Anonymous (2)
Susan Arnold
Karl & Anne Aschenbach

Don & Judy Atkinson
Mr. & Ms. Ronald Austin
Tim Bachand
Michael & Christine Baeta
Ludovic Baimvel & Dow Anthony Eichenlaub
Kevin & Cheryl Baptist
Caron Barrett
Mr. & Mrs. Gerald Barron
Robert & Linda Barron
Mr. & Mrs. William (Bill) Barrow
Julie Battles & Mehran Karimabadi
Paul & Pamela Beagle
Greg & Tiffany Benton
Mrs. Fumiko K. Beppu
Bob & Nancy Bernel
Bill & Barbara Best
Dr. Eugene & Mrs. Eloise Bliss
Emily Bott
Glenn Brooking
Philip & Evelyn Brown
Gloria & Charles Buckingham
Ms. Carol M. Bull
Michael Burkovskis & Dariece Oki
Kevin Butler & Troy Yamauchi
Cary & Karin Button
John & Iracema Cahill
Mr. & Mrs. Joseph Calimi
Mr. & Mrs. Paul Campbell
Steve Campbell
Mr. & Mrs. Mario Cardone
Melvin Catugal
John Cho & Jeannette Iwado
Marge Cieri
Kathy Collins
Sabrina Coloma
Candace & Michael Conway
Ward & Lois Cook
Malia Cordero
Lynn T. Craft
Abel & Barbie Cravalho
Dottie Crouse
Ann & Dougal Crowe
William & Judith Dailey
Theresa Daly & Trudy Anthony-Hoppe
Bill Darrah
Kay Deck
Ms. Tulasi Dennis & Ms. Vrindavan Graham
Paul & Kimberly Dobson
Peace Eagle & Rainbow Star Dolphin
Pat & Dick Doran
Suzanne & Glen Douglas
Debbie & Robi Einekave
Richard Emery
James Empson & Amy Cantwell
Lehua L. Engrl
Brad & Pam Farnsworth
Juliam Figueroa
Ken & Nancy Findeisen
Mr. & Mrs. Randy Finlay
Dr. Donald & Patricia Fisher
Mr. & Mrs. Robert Fjeldstad
John & Janice Francis
Michelle Frost
Mr. & Mrs. Robert Fujimoto
Mr. & Mrs. David T. Fukuda
Steven Funes & Kathy Funai
John Gilmor & Richard Emery
Mr. & Mrs. Kim Greenwell
Matt & Allison Guard
Glenn & Kathy Hamai
Sue & Bruce Hansen
Howard & Alma Hanzawa
Bradley Harger
Mr. & Mrs. Robert Harms
Mr. & Mrs. Tom Hauptman
Michael & Janice Hazen
Mr. Trevor R. Hendershot & Faina P. Tackaberry
Charlotte E. Hepler & William Peters
Mr. & Mrs. Fred Heltzer
Mr. & Mrs. Dale W. Hillman
Stanton & Shirley Hooper
Mr. Patrick E. Howard & Ms. Kimberly Nichols
Ron & Barbara Howard
Lee & John Hoxie
Mr. Felix Hubinger
Misty Hudspeth
Lehn Huff & Les Skillings
Larry Hundebly
Tom & Kaye Hunter
Edwin & Edith Ichiriu
Mr. Al Imamura & Ms. Estelle Yamashita
David & Carolyn Israelite
Raymond & Phyllen Jackson
Dr. & Mrs. William C. James
Linda & Henry Jameson
Mr. & Mrs. Richard Johns
Mr. & Mrs. Malcolm Johnson
Tami Joslin
Mr. & Mrs. Jan Kasprzycki
Mr. & Mrs. Jerry Kawahara
Mr. & Mrs. George N. Kaya
Olinda & Michael Kelley
Lloyd Y. & Jennie H. Kimura
Mr. & Mrs. Bill King
Paul Kirby
Gary & Julie Kraft
Stella & Sharon Kuwae
Michael & Colette Ladera

Thomas J. Lambert & Kristina E. Lyons
Richard Langford
Frederick Langille & Rita Barreras
Joey Larimer & Lori Perreira
Mitch Lau
Ms. Michelle Lawrence & Mr. James Harris
Donald & Pamela Lehman
Dr. Paula & Martin Lenny
Tom & Anne Leuteneker
Phyllis Levean
Robert C. Ley
Mr. & Mrs. Peter Lige
Mr. Patrick Lindgren
Carl & Rae Lindquist
Jaime R. Lobato
Mr. & Mrs. James Loughead
Carole & Charles Lusch
Dr. Elizabeth Lyons
Wayne & Marilyn Maddux
Neal Maeda & Jo Ann Nakahara
Alvin Makimoto
Ms. Marguerite Malcolm
Michael & Jane Maloney
Jackie Martin & Ron Reed
Mr. & Mrs. Chuck Maryatt
Michael & Nancy Mateja
Valorie Melby
Paul & Rosalyn Meyer
L.J. Millikin & Fran Buese
Faye Murayama
Ray & Bobbi Nakagawa
Joyce Nakanishi
Charlie & Shelley Nalepa
Mr. & Mrs. Matt Napier
Mark Nifong
Iris & Sebastian Nola
Marceline C. Olson
Robert & Diane Olson
Mrs. Hertha Orszula
Jan & Myles Osterneck
Betty M. Ota
Ms. Elizabeth Paahana
William & Carol Papsco
Lisa & Doug Paulson
Les & Marcia Perreira
Mr. William S. Peters
Nydia Pinzon & Ron Slack
Kathy Platt
Janice Porter
John & Sue Porter
Kalani & Deatrea Puu
Mr. & Mrs. David Rand
Janice & Bob Raney
Dennis & Roxanne Reimink
Lois & Lee Reiswig
David Richardson & Milla Pullatch
Mr. Ron Riechers
Bill & Monica Riker
Karl & Patricia Rohlfing
Robin & Peter Rohrer
Judge & Mrs. Eric Romanach
Patricia Romero & Will Hutchison
Bob & Margo Rowland
Sherr Ruane
Adele Rugg
Sharon & Barry Saito
Ann Sakamoto
Dr. Clyde M. Sakamoto
& Mrs. Gerrienne G. Sakamoto
Mr. & Mrs. Kyle K. Sakamoto
Louis Salazar
Tom & Janice Savidge
Mr. & Mrs. Jerry Schumb
Anna Mae Schwartz
Mr. & Mrs. William E. Seehafer
George & Nobuko Seriguchi
Marilyn & Bill Shepard
Anna Mae & Winifred Shishido
Patrick & Cristine Simmons
Dr. Richard & Anne-Marie Simon
Rosalind Smith
Roman Sousa
Mr. & Mrs. Neville Spadafore
David & Pia Spee
Mr. Kent Stewart
Robert Stoner
Diana Stuart & Family
Kazuo & Toshiko Sugiki
Peggy & John Sullivan
Anthony & Audrey Takitani
Larry Tam Ho
Naomi Tamura & Sidney T. K. Yee
Dr. Bruce R. Taylor & Dr. Lise M. Stevens
L. David & Allison Taylor
Rick & Shelby Thompson
Curtis & Joy Tom
Patricia A. Toyama
Bruce & Dawn Ueki
Alan & Linda Unemori
Maureen VanDenburgh & Darren Corrao
John Vasconcellos
Robert & Baerbel Wagar
Mr. & Mrs. Clyde (Bud) Wagner
Gregory Ward
Buff Weaver
Dr. & Mrs. Albert Weihi
Dr. & Mrs. Gary Weiss

Robert & Jeanette Welle
Dr. C. Joseph Welter & Ms. Susi Oak
Coralie & Will Willett
Scott Williamson
Lee Wilson
Amy Wistoff-Martin & Kathy Wistoff
Dick Wojcik
Paula Wright
Mr. George R. Yaksic
Wallace Yanagi
Dr. Robert & Mrs. Lu Anne Yapp

'Ohia Club

Fran & Jimmy Aarona
Donna Aarona-Lorenzo
Sherwin & Teresa Abay-Abay
Hideo & Nobuko Abe
Kenji & Fay Abe
Kim Abrahamson
Wendy Adcock & Robert Malinowski
Fred & Jennie Adlar
Marty & Helida Adler
Ms. Kathi Adoue
Norene & James Aganos
Takuzo & Rebecca Ageno
Melanie Agrabante
Ralph & Debbie Ajifu
George A. & Kanani Akana-Kealoha
Rowena Aki-Bukoski
Betty & Bruce Alberts
Paul Alkire & Christine Conlon-Kemp
George & Janet Allan
Linda & Dave Allegre
Chuck & Sandy Allen
Joseph Allenwood & Donna Finidori
Sherry Allison & David Langille
Mary Allton & Danny Brown
Dr. Edward Almqvist
Debra & Dino Amick
Raje & Kabba Anand
John & Athena Andersen
Mrs. Moana L. Andersen
Blair Anderson
Mr. & Mrs. Dick Anderson
Hope Anderson
Janet Lee Anderson & Warren Pung
Mr. & Mrs. M.E. Anderson
Cynthia & Vern Andrews
Mr. & Mrs. Mark Andrews
Dr. Joseph E. Andrews
Ric Andrews
Jack & Jeanne Androvich
Anonymous (3)
Mark & Sheila Apana
Mel Arausa & Noelle Furtado
Dr. & Mrs. Alfred Arensdorf
Mits & Eleanor Arisumi
Tady & Sandra Arisumi
Henry & Maureen Ariyoshi
Mr. & Mrs. Charles Arledge
Melinda & Richard Armour
Jean H. Arnold
Charles & Marilyn Aruda
Mr. Evan Asato
Mr. & Mrs. David Asher
Karen Asiu
Mr. & Mrs. Fred Asuncion
Rona & Joel August
Joseph Azzara
Bernhard Bach
Steve & Debbie Badois
Mr. & Mrs. James M. Bailey
Robert & Sharon Bailey
Arnold & Darlene Baines
Dr. & Mrs. Bobby Baker
Chuck & Maryann Baker
Peter W. Baker
Gene & Beryl Bal
Mrs. Janet Bal
Heather Balagso
Kimberley Baldwin & Khloe Nalani Dickson
Sharon & Ricky Balidoy
Kai Bargamento
Rita P. Barksdale
Rocky Lee Barnette
Rhonda Barranco
Iral & Gwen Barrett
Emilie Batangan
Terry & Harley Bates
Susan Beall & Brett Mason
Lynne Bear
Alan & Diane Bearline
Debbie Beaver & Linda Rosenberg
Eric & Mary Jean Bega
Richard & Libby Behn
Julian & Patricia Bellin
Elaine Bennett
Charles Benson
Gertrude Benson
Harold & Rosalind Berman
Mrs. Anna Bernhard
Chuck & Barbara Besanty
Chris Bettis
Jon & Joan Betwee
Casey & BJ Beyersbergen
Barbara Bezdicek & Ray Mayron
Earl Bialeck
Anne Biedel

Rollene Billings
Catherine Bio
John & Gina Biondi
Richard & Isabella Bissen
Anne Marie & Mario Bitonti
Mr. & Mrs. Robert Bitter
Mr. & Mrs. Robert Bjornson
Mark & Joleen Black
Robert & Joette Black
Tom Blakeley & Melissa Serrano
Richard & Judith Blakemore
Michael Blaz
Mark & Chrystie Blietz
Ms. Diane Blue
Jon & Rosie Blum
John & Nancy Boarini
Mr. & Mrs. George Boettger
David Bohn
Dale & Marjorie Bonar
Larry & Robin Bonas
Eddie Bonilla
Hilda (Nita) & Harry Bonte
Gawain Booth
George & Patricia Borg
Patrick Borge Sr.
Gordon & Sheila Bosch
Jennifer Boucher
Charles & Marilyn Boyd
Dr. Ronald & Mrs. J. Dale Boyd
Martin & Joan Brashem
Robert Brede
Carl & Judith Brethoff
James & Carol Brennan
Lynn Brewer
Elaine Bridge
John & Ilona Briley
Paul Brock
Deborah Brooks & Lisa Hawks
Heather Brooks
Debra Brown
Donna & George Brown
Mr. & Mrs. Frank Brown
Irene Brown
Jeff & Tammy Brown
Keith & Nancy Brown
Sally & Larry Brown
Selma & Bernard Brown
William & Judith Brown
Mr. & Mrs. Zador Brown
Ronald & Lydia Brumblay
Hugo & Shirley Burtler
Andrew & Zora Bulatovic-Trumbo
Michael & Elizabeth Burke
Mr. & Mrs. Bunt Burkhalter
Richard L. Burkitt & Karen Hanson
Dr. Carole Burstein
Rod & Kathy Burton
Wilfred & Catherine Burton
Lynn Byard & William Pollock
Nancy & John Byrne
Francine Cabacungan & Randi Kaowili
Ms. Hermina Cabebe & Mr. Bob Ludwig
Stephen & Lucky Cabral
Mr. N.W. Cady III
Ku'ulei Cagasas
Gary Canier & G. Owen Howson
Michael & Elisa Cannon
Alan W. & Claudia Canon
Mr. & Mrs. Lloyd Canty
Michael Capuano & Mary Hope
Francesca Carey & Thomas Douma
Dr. & Mrs. George Carlson
Sarah Carlson & Jeff Stolz
Robert & Debbie Carr
Wayne Carson
Carmela K. Casco & Kenneth K. Kamakea
Eileen Cashmere
Mr. John Cassel
Nerissa Catbagan
Robyn Cavitt
Quetzal Chacon
Robert Chapman
Sybil Sea Chappellet
Mr. & Mrs. Hugh Chare
Luis Chavez
Art & Jane Chenoweth
Dr. Peter Chin & Dr. Nicole Apollona
Keoki Ching
Winston Chinn
Ed Christensen & Kathy Heller
Jill Christerson & Keahou Mitchell
Phil & Marge Christopher
Sandra Civitano
Thomas & Carole Clark
Thomas & Janey Clark
Thomas & Michele Clark
Mark & Denise Clayton
John & Debbie Claypoole
Dr. & Mrs. W.T. Cleghorn
James & Cindy Clemons
Stanley & Helga Cobb
Isa Cocallas
Terry Codington
Mr. Tom Cole
Terry Collins
Lee & Michael Cone
David & Diane Conklin
Mr. George Connor & Ms. Rita Johnston

Darla Cook & Edward Bigger
Kathleen Cook & Richard Wayne
Diane Cooper & Richard McLaughlin
Thomas Corbett
Alan & Alicia Cordeiro
Sean & Tami Corpuel
Glenn T. & Ululani S. Correa
Robert & Ramona Corson
Alvin & Stephanie Cortez
Lance & Cynthia Cowan
Andrew & Tara Crawford
Tanya Cress
Mrs. Joan Crevier
John & Erin Crinion
Mike Crowe
Trudy Crowell
Ron & Sharon Dahlquist
Mr. & Mrs. Tim Dahms
Mr. & Mrs. Masao Daida
David P. Dalzell
Don & Colette Dang
Brian & Eva Daniells
Matthew & Sandra Daniells
Lisa A. Darcy
David Darling
Melinda & Mathew Dauenhauer
Lisa Davis
Mary Kay & Jay Davis
Patricia Davis
Peter E. Davis
Tony & Yolanda De Andrade
Grace Y. L. & Keoki De Porter
Faith & Jim Debuhr
Helen DeCote
Amy Deddens & Lauren Henderson
Laurie Lei & Alton DeGama
Brent & Candace Degano
Dorothy DeGusman
Mr. & Mrs. Robert Dein
Marie DeJournette
Kathleen Deknis
Dana Delany
Eric & Karen Demaria
Don Dembert & Carol S. Nelson
Mr. Andy DeMello
Bob & Bev Deming
Marise DePonte & Anne K. Tam
Joe Devane
Mr. Martin Diamond
Kay Dillon
Kathleen Dimino
Dr. Lorne Direnfeld
Lori Dodd
Pam & Kai Dodson
Sherrielee Dodson
Russell & Sharlene Dooge
Joline Dornier
Clarissa & Blythe Douglas
Greg & Stacy Downs
Thomas & Sandra Duckworth
John & Marilyn Duke
Mr. & Mrs. Wayne Dumalanta
Mr. & Mrs. Charlie Dungsans
Michael & Halleh Kokani Duniciffie
Sherry Duong
Normand & Sheila Duquette
Keith Eastling
Mr. Randy Echito & Mr. Daniel Bisler
Mr. & Mrs. William Eckhoff
John Eddins
Froyam & Shone Edel
Joel & Jennifer Edwards
Judy Edwards
Sally & Daniel Ekdahl
Walt & Sharon Elf
Mr. & Mrs. Carter Elliott
Gary & Pamela Elster
Mr. Randall & Dr. Patti Endo
Ray & Jane Ennis
Csilla Erdelyi & Randall Saulsbury
Sumner & Angie Erdman
Terri Hope Ewbank
Barbara A. Exton
Dr. Eileen Exton & Ron Togashi
Nissim & Jennifer Ezekiel
Lu Faborito
Debbie Moran Fagan & William Fagan
Sue Falltrick
Mr. & Mrs. Bill Farrell
Robert Fassell
Pat Federell
Lucy Feinberg
Kathryn Felten
Jodie & David Fenton
Manny & Jo Fernandez
Eric & Sandra Ferrer
John & Suzy Ferreri
Francisco Figueroa
Mrs. Catherine Fink & Ms. Cathy Carlson
Carolyn Finnegan & James Finnegan
Robert & Durlyn Finnie
Barbara Fisher
Gretchen Fisher & Steve Kreider
Mike & Kela Fisher
Philip Fleck Jr.
Scott Fleck
David & Denise Fleetham
Theresa Audrey Flores & Dorothy DeGusman

John & Jennifer Flynn
George & Paige Fontaine
Frank & Maile Ford
Dennis & Nami Foree
Shirley Forsgren & Donna Sonnenberg
Beverly & Tomas Foster
Prestine Foster
Mr. & Mrs. Adrian Fourie
Julie Frank
Julie Frazier & Anne Higley
Mary Ann Frechette & Ronald Chamberlain
Allyson & Warren Freeland
Mr. George Freeland
Dr. & Mrs. Geoff Fricker
Anne Friedman & Karen Twitchell
William & Ramona Friel
Lauri Fritsch & Russell Speck
Bob & Christine Fritz
Michael Frost & Leah Frost
Lane & June Fujii
Rodney & Barbara Fujimoto
Douglas Fujiwara
Casey & Valerie Fukuda
Ronald & Kay Fukumoto
Mr. & Mrs. Bryan Funai
Raymond Fuqua
Dr. & Mrs. James M. Furukawa
David & Andrea Futch
Gabe & Kim Gabrelcik
Marianne & Michael Gaertner
Amanda & Edward Galarita
Alan & Joetta Gambill
Lynda Gamblin
Timothy Kapua Gapero & Mary Jane Gapero
Maria R. Garcia
Mr. & Mrs. Fred Gartley
Susan Gaspar & John Castro
Steven Gatchell
Grant Gauthier & Barbie Yamamoto
Mr. & Mrs. James Gerken
Mr. & Mrs. Robert Gerlach
Becki Gieber & Brien Takiguchi
Ms. Darcel Gilbert
Capt. Roger Gildersleeve & Elena Korsakova
Lynne Gilroy
Bethany Gingerich
Lloyd & Earlyn Ginoza
Shelly Glass
Ann Glen & John Fairbank
Thomas Glesne
Lahar Goldberg & Abhaya Goldberg
Mr. & Mrs. Steve Goldstein
Irene Gombac
Sheree Gonzales
Ronald Good
David Goode
Mr. Paul Gouge & Ms. Lori Betty
William & Nina Gough
Ms. Pam Gould
Rorri & Shannon Gould
John Graf
Mr. & Mrs. Dave Graham
Art & Marilyn Granito
Laura & Terry Grant
Janet Grantham & Bart Mulvihill
Matt Grauso
Mr. & Mrs. Paul Greenman
Sally Gretz & Wendell Inamasu
Colette Griffin
Vicky L. Grimes
Mr. & Mrs. John Grippi
Bob & Linda Grissom
Gary & Margaret Groth
Brad & Jane Grover
W. Eugene Groves
J.B. Guard & Emalia Brown
Mr. & Mrs. John B. Guard III
Russel & Muffy Gushi
Wendy & Jacob Gusman
Ludy Gutierrez
Jo Habib
Patti Hackney & Donald Dunhaupt
Dr. Mark Haddad
Alyce Haines
Jack & Barbara Hale
Mark Halik
Mr. & Mrs. Robert Hall
Ms. Nancy Jane Halley
Mr. & Mrs. Alexander Halsey
Mr. & Mrs. Clyde Hamai
Marilyn & Rick Hanks
Lyle & Alexa Hanohano
Robert & Donna Hansen
Margaret Hanzawa
Jeanne Hardie & David Ferrebee
James & Lesley Hargrove
Mr. Alan Harris
Rev. Maeva-Louise Harris
Marlon Harris & Jean Angelheart
Patricia & Carl Harris
Joe & Cherry Harrison
Ms. Nancy Hart
Dan & Linda Hartley
Traci Hashiro
Derrick Hatada
Persis Hataria
Milford & Aileen Hatcher
Mr. & Mrs. Leander Hathaway

William Haus & Patti Welton
Mel & Gail Hayashi
Mr. & Mrs. Kimo Haynes
Fred Hayward
John B. Hearne
Mr. Mark Hecht
Michael & Martha Hecker
T.N. & Frances Heiningner
Misty Heinsman
Ernest Heller & Patricia Smith
Monica Heller
Scott Heller
Mr. Steven Heller
Mr. & Mrs. John Hendrickson
Mr. & Mrs. William Henry
Marty Herling
Mrs. Mary Hertz & Ms. Virginia Hertz
Evelyn Heu & Elise Moniz
Garret & Mary Hew
Ernie & Colleen Hewlett
William & Machiko Heyde
Tom & Doris Higa
Calvin & Sharon Higuchi
Clark & Maura Hill
Harold Hill
Tim & Teddy Hill
Mr. & Mrs. Edward Hirai
Mr. & Mrs. Tom Hiranaga
Frances & Raymond Hirano
Moana & Robin Hirata
Mr. & Mrs. Meiji Hirose
Mr. & Mrs. Kenny Hirschhorn
Carmela J. Ho & Annette L. Haaff
Steven Hodges
David & Pam Hoff
Ms. Mimi Hoffman
Jodi Hogin
Dennis & Dianne Holland
Carl & Kelly Holmberg
Kristin Holmes
Mr. & Mrs. Ted Holmes
Robert & Tamara Horcajo
Ed & Charlotte Horstman
Donald & Geraldine Hoscheit
Ms. Michele Hough
Peter Houle
Barbara Hoyt
Jodi Hue Sing
Harlan Hughes
Mr. & Mrs. Thomas A. Hughes
Tim Hultquist
Kirk & Joan Hunt
Carol & Wayne Ibers
Mr. Arnold Imae
Dr. T. Imray & Mrs. Carla Imray
Rae Inokuma
Mitchell Irwin & Lisa Kemp
Tamatha Isitt
Craig Ives & Beth Skinner
Mark Ives
Lynn Iwamasa
Jay Jacinto
John & Kay Jackson
Mark Bladen Jackson
Robert & Cheryl Jacobson
Mary James & Cathy Padilla
Paul Janes-Brown
Andrew & Nikki Janssen
Brian Jenkins & Lisa Fuller
Mrs. R. Virginia Jennings
Rail & Janet Jennings
Mr. & Mrs. Grafton Jhung
Hal Jobe & Gary Mohrlang
Ann Elaine & Phillip Johnson
Suzanne Johnson
Walter & Pam Johnson
Wayne & Dolores Johnson
Scott Johnston
Kimberly & Kevin Jones
Nadine & Ward Jones
Carl Jordan
Ms. Deborah Jordan & Mr. Bernard Cortinez
Konrad Juestel
Richard Jurgens
Patricia A. Kaauamo
Dr. Glenn & Beverly Kadohiro
Edward & Bobbie Jo Kahakauwila
Tina Kaikaka
Bruce & Susan Kalua
Raiph & Ann Kamm
Joseph K. Kanahuna & Cynthia Phillips
Ed & Mieke Kanemoto
Mr. & Mrs. Robert Karpovich
Andrea & Hinano Kawamehiwa
Roger & Rose Kawasaki
Julie & Ali Kean
Robin & Jennifer Kean
Gil & Kallie Keith-Agaran
Richard & Susan Kellom
Michael T. & Madeline Kennedy
David Kenney
Norman & Lynda Kenney
Tom Kennis
Joseph Kentz
Dr. & Mrs. William Kepler
Sheri & John Kerr
Colleen & Brad Kibler
Frank & Leinaala Kihm

Mr. & Mrs. Jim Killeit
Miyo & Duane Kim
Mr. & Mrs. Robert Kimball
Gerald & Alice Kimura
William Kinaka
Allan & Janice King
Mrs. Margaret W. King
Mr. Martin King
Mr. & Mrs. William H. King
Susanne & Avi Kiriarty
Ms. Susan Kissler
Mrs. Judy Kitagawa
John (Jack) & Maribeth Klobuchar
Keith Knapp
Lenore & Charles Knobel
Jannette Knowley
Kent Knowley
Mizue Kobayashi
Patricia Kochi & Cynthia Kochi-Kaiama
Mrs. Thelma Kocivar
Kyle Kodama & Wendy C. Ono
Mr. & Mrs. Tamatera Kodama
Matthew Kohm
Kerry Koike & Sandi Watson
Mr. & Mrs. Kenneth Y. S. Kong
Victor & Maryvonne Kosatschkow
John & Sonia Kreag
Douglas & Maureen Kubo
Gaylord & Young-Shin Kubota
Miss Joy Kubota
Mr. & Mrs. Mark Kubota
Dr. & Mrs. Micheal Kuhn
Gordon & Peggy Kuia
Sanoce Kuia & Jamie Campisi
Ms. Karen Kurokawa
Ms. P. Denise La Costa
Cynthia Conrad & Jerry Labb
Betty Jean Labrenz
Dr. & Mrs. R. Gregory LaGoy
Mr. & Mrs. Larry Laird
Jean A. Lakin
Mr. & Mrs. Bill Lamson
Suzanne Landin
Mr. & Mrs. Richard Langman
Robert & Mary Lanser
Peter Leber
Mrs. Betty Lasbury
Mr. & Mrs. Henry T.S. Lau
Gina & Steven Lawless
Robert D. Lawrence
Margaret Lawson
Jeannie Lay
Nancy & Roger Leahy
Fred Leber
Carolyn & Kirk LeDuc
Robert Lee & Julianne Perry Lee
Mr. & Mrs. Wayne Leigh
Julie Leis
Carol & Dean Lem
Paul Lempio
Mr. Noah Leong & Ms. Leola Muromoto
Dr. Bruce & Mrs. Astrid Lepolstat
David LeRoy & Ellen Reyes Wilson
Patti Ann Leval
Ruth Levin
Mary Liebner
Mr. P.A. Lilly
Vincent Ryan Linares
Gregory & Erin Lincoln
Jim & Sue Lincoln
Mr. & Mrs. George Lindell
Lorna Lindsay
Jamie & Mike Linehan
Dr. & Mrs. Earl Little
Ms. Mara Lockwood
Kim M. Lopez
Mr. & Mrs. Hal Louchheim
Ellen Loucks
Thomas & Patricia Loughran
Mr. & Mrs. Avery Loy
Wayne & Bernice Lu
Linda Ludwick & Michael McGuire
Mrs. Nancy Ludwig
Jeffrey & Suzanne Lundahl
Gregg & Marleen Lundberg
Francis & Susie Luyet
David & Deborah Lycette
Diana Lyons & Sonny Gamponia
Sam & Camille Lyons
Marilyn Lytle
Andria MacDonald
Mr. & Mrs. Todd MacFarlane
Leslie MacKenzie & Scott M. Smith
Earl & Joy Magarifuji
Mayla Makana
Loren Malenchek & Adam Gomez
Dr. & Mrs. Kenny Malott
Diane Mangini
Jonathan & Beatriz Mann
Therese & David Manner
Robert Manning
Richard & Judith Manthei
Mr. & Mrs. Dominick Marino
Andrew Martin
Daniel & Marcy Martin
Mr. & Mrs. Frank Martin
Howard Martin
Mr. & Mrs. Tom Martin

Jay & Lorri Martinez-Reyes
Jerry & Roberta Masaki
Mr. & Mrs. William Masotti
Ben & Juliana Massenbun
Robert Masters & Carol Davis
Mr. & Mrs. Michael Masterson
Mike & Becky Masterson
Harlan & Marnie Masuda
Douglas Mathies
Noboru & Yaeko Matsuda
Lynn Matsui
Robert & Edith Matsumoto
Mr. Chris H. Matsura
Mr. & Mrs. David Mattos
Harvey & Theodora A.K. May
Gerard Mazzacano
Nancy & J. Thomas Mc Carthy
Vern & Mimi McAleer
Maren & Alec McBarnet
Mary Jane McBarret
Jack & Linda McBride
Thomas & Dixie McCarthy
Kevin McCowan & Linda Duarte
Haley McCraney
Steve McCullough
Robert McDaniel & Sunny Palmer
Sean McDaniel
Lynn & Gary McFarlane
Robert McInerney
Mr. & Mrs. Adelbert McIntyre
Karen & John McKee
Kelly McKenna
Ted & Barbara McLaughlin
Jim McLemore
Wanda McMaster
Dennis & Cynthia McMillian
Mark McMillan
Judge & Mrs. Douglas McNish
Michael McPherson
Scott & Debi Mead
Richard & Jo Ann Meaney
Mr. & Mrs. Rick Medina
Mr. & Mrs. Ed Mee
John Scott Meidell & Linda Matossian
Mark & Janis Melone
Howard Mendelsohn
Jeff & Debra Merle
Mr. & Mrs. Kurt Mervis
Mikel Mesh
Mrs. Frances C. Meshulam
Michael Messmore & Jamie Ino
Dr. Metts & Mrs. Katy Maberry
Carl & Jacklyn Meurk
Nancy E. Meyer
Mr. & Mrs. Norman Mezin
Lola & Cameron Milani
Brian Miller & Kathleen Pico
David & Lynne Miller
Eric Miller
Jodi Miller
Steven Miller & Michelle Lamicq
Vernon & Connie Miller
Tom & Wendy Milovina
John & Jean Min
Randall Minas
Mr. & Mrs. Chris Minford
Eric Mitchell
Mr. & Mrs. Don Mitsumura
Jean H. Miyahira & Jane Kupau
Kyle Miyajima
Dr. & Mrs. Alan Miyamoto
David J. & Maryanne Moe
David & Geraldine Mojas
Mr. Jay Henry Molina & Mrs. Cheryl Tomlin-
Molina
Mr. & Mrs. Bernard S. Momita
Teena Monden
Dr. Meredith Moon & Dr. Bruce Glen
Richard & Sandra Moore
Susan Moore & Judy Duvall
Mr. & Mrs. Tim Moore
Ohua & Steve Morando
Amanda Mori & Kimo Ching
Elsie & William Morimoto
David & Lil Morreira
Robert Morreira & Sondra Montgomery
Cecilia Morris
Neil & Shirley Morrison
Cecil & Patti Morton
Douglas Mossman
Eric H. & Violet Y. Moto
Mike & Kathy Mouat
Kade S. Mount
Edward & Lori Muegge
Cheryl & Patrick Mullen
Patrick & Juliette Mulligan
Mr. & Mrs. Philip E. Mulligan, Jr.
Todd & Lourdes Mullikin
Jackie K. Murai
Raiph & Grace Murakami
Akiyo Murata & Tan Altinbay
L. Sue Murray
Kris Musto
Leila Nacua & Miyoko Kubo

continued on page 22

Annual Donors

continued from page 21

Mr. & Mrs. John Naeole
Lester Nakama
Charlotte C. & Alvin T. Nakamura
Elaine & Jay Nakashima
Mr. Max Nakatani
Abner & Sarah Nakihei
Peter & Janet Naramore
Patt & Joseph Narrowe
Mr. & Mrs. Gerald Nash
Wendy & Michael Nathan
Mike & Peggy Naylor
Jesse & Ann Neizman
Dave & Lisa Nelson
David & Brigitte Nelson
Thomas & Karen Nelson
Mark & Deborah Nesbit
Corrine Neubert & Gail Neubert
Alex Neuhoff
Robin Newbold & David Amack
Michael & Connie Newbro
Mr. & Mrs. Richard Newman
Scott & Tessa Newman
Karen Bouris Newton
Yukie Ng
Carolyn Nichols
Mr. Cliff Nickens & Ms. Paula Wagner
Jim & Patti Niemeyer
Carolyn Nishimura & Brie Nishimura
Carrie & Wesley Nohara
Jan Nolan
Mr. John Nolte & Mr. Jon Accardo
Anne S. Norris
Robin & Gordon Norris
Mr. & Mrs. Robert Norton
Craig Novak
Robert & Penny Novello
Jack Nowell
Michelle Nubel
Betty O'Connell
Richard & Peggy Odiome
Dr. Lance Ogata
Michael & Rosanne Ogles
Geri Ohta
Anne M. Oishi
Scott & Shari Okada
Linda Okita Tom
Bruce & Lizbeth Olsten
Hideo & Fusako Omine
Geraldyn Onaga
Michael Onofrietti
Mr. Paul Oppenheimer & Ms. Joanne Judge
Nadine Onikasa
Warren & Helen Onikasa
John & Deanna Orsburn
Ms. Wendy Osher
Yong Ju Oshima
Norman & Althea Oshiro
Prudence Ota
Stephanie Ouchi
Barry & Linda Owen
Carey Owen
Mr. & Mrs. Paul Owen
Frederick Pablo & Luise Braun
David & Joan Padgett
Katherine Paet
James Palmateer
Laura Paresa
Joanna Paris
Mr. & Mrs. Dave Parrish
Heather & Rob Parsons
Clifford T. Pastor
Dr. Apollinario & Holly Pastrana
Julie & Patrick Patterson
Andy & Tammie Paul
Carolyn Pavloff
Woody Paylor
Howard & Sharon Pearson
Dennis Pederson
GJ & Becky Pelissero
Louise S. Fell
Shelley Pellegrino & David Merchant
Ricardo Perez-Garreard
John & Alice Perry
Lynn & Joseph Perry
Hal & Cynthia Pestana
Kelley Peters
Jim & Judith Peterson
Mr. & Mrs. Ken Peterson
Mr. Mark Peterson
Thomas & Deborah Peterson
Paul & Yvonne Petro
Mr. & Mrs. Robert Pleiffer
Larry & Rachel Phillips
Mr. & Mrs. Raymond Phillips
Veronica & Howard Pietsch
Bill & Debby Pigott
Patrick & Roberta Pilcher
Michele & Raphael Pimental
Fred & Beverly Pinkerton
Tim & Kathy Pisoni
Melissa Platiro
Mr. & Mrs. James Platz
Joseph D. Pluta
Richard & Cori Pohle

Beverly & Tom Pollard
Robert & Klazina Pollock
Michele & Ken Potts
Diana Poulsen
Mr. & Mrs. David W. Pratt
Todd & Debra Preseault
Sharon & Jack Priegel
Myrtle Pzyk
Brandon Qualls
Henry Quayle & Janis Casco
Mr. & Mrs. T. Adam Quinn
Celeste Rabang
Albert & Jeanne Rabold
Arlene Ramirez-Nicholas & W. Tim Moriz
Miriam Ramos
Barry & Nancy Rand
Joel & Kehaulani Rand
David & Doreen Randall
Helen M. Randall
Fred & Maria Rawe
Robert & Christine Ray
J.B. Rea
Mr. & Mrs. Don Reeser
Thomas Reher & Beverly Lemaster
Mr. Jonathan Reily
Terry Reim
Bernadette Reiter
Steven H. & Helen Rempel
Sandra Reyno
Mr. Doug Rice & Ms. Christine Andrews
Dr. & Mrs. Glen Rice
Martha Ann Rice
Amy Richards
Joel & Elaine Richman
Richard Richter
Robin & Jillian Ridington
Paul & Shirley Risinger
Mr. & Mrs. Allan Robb
Eric Roberts & Maribeth Theisen
Pauline Roberts
Lorna Robertson & Sue Hunt
Eldon & Barbara Robinson
Richard & Shannon Robinson
Robert Robinson
Mr. & Mrs. Glenn Robison
Grace Robison & Ron Klonoski
Martin & Jo Rockwell
Joel & Leilani Rodrigue
Angela Rogers
Darlene & Wally Rogers
Nancy & Ray Rogers
Donna Rohrer
Donna Rolens
Lupe Romias
Wendy Rose
Mr. & Mrs. Steven Rosen
Mark & Carol Ross
Melvin & Maureen Ross
Cynthia Roth
Ms. Grace Roth & Mrs. Winona Watanabe
Ron Rothlisberger
Mr. & Mrs. Roger Rowehl
Adelaide Rowland
Sarah Ruppenthal
Jim & Sheila Rutherford
Mr. & Mrs. Albert Saiki
Patrick & Karen Saka
Dr. & Mrs. Leonard Sakai
Doris & Chad Saki
John & Mabel Sakuma
Wendell & Janice Sakuma
Barbara & Daniel Saldivar
Chris Salem & Chea Chong
Louis & Nancy Salera
America Salinas
Shannon Sanders
Fredrick Sands
Mrs. Charles Santore
James T. & Ann Sato
Susan & Creighton Sato
Karl Sauer
Anita & Bruce Saunders
Lynda Saunders
Michelle & Sebastian Sayegh
Mr. & Mrs. Nick Scangas
Bruce & Madge Schaefer
Kenneth & Kathleen Schaffer-Barr
Chris Scharein & Ted Gee
Jane Scheid & Wm Gill Brooks
Holly Schmalenberger-Haugen
Christine & Richard Schmidt
Mr. & Mrs. William Schmidt
Steven & Lynn Schorr
Ms. Patty A. Schumacher
Mr. & Mrs. Thomas Schwab
John & Susan Schweiner
Ross & Anna Scott
Steven Scott
Jeanene & Brendan Sebstad
Noah & Naomi Seymour
Mr. & Mrs. Daniel Shafer
Ari & Eilyn Shapiro
Mr. & Mrs. Jerry Shapiro
Nancy Shearman
Douglas & Anna Marie Sheehan
David Sheetz & Iwona Maczkowska
Gregg & Wanda Shelton
Mr. & Mrs. Robert Shelton

Kirk Shepard & Miss Kayla Shepard
Mrs. Shirley Shepherd
Clifford Shibano
Daniel Shiraki
Pamela Shirley
Allen & Jan Shishido
Kathy Shoemaker
Willie Shuken & Rachel Taft
Wesley & Janice Shyer
Richard & Deborah Siegert
Adell Sievers
Mr. & Mrs. Stephen Silard
Leona & Stacey Silva
Jeffrey Simon
Mark Simon & Marina Batham
Ned & Brooke Simonds
Ms. Sally Simonds
Mrs. Janet S. Simons-Gerritsen
Ken & Deborah Sinclair
Annabehl & Sky Sinclair-Delaney
Maura Sindel
Bob & Cindy Singer
Mr. Peter Sisco
Don Smart & Peggy Ann Shea
Dr. Edward A. Smeloff & Ms. Carole Linden
Albert E. & Carol Smith
Bruce & Joy Smith
Dr. & Mrs. Byron Smith
Mr. & Mrs. David B. Smith, Jr.
Donny & Sada Smith
Donald Smith
Kathryn & Doug Smith
Mr. & Mrs. Ken Smith
Kim Smith
Dr. Terrance Smith & Dr. Debbie Dorsey
Dr. Tim & Mrs. Nancy Smith
Norman & Sonia Snow
Kathy Snyder
Tammy & Frank Soares
Dr. & Mrs. Charles A. Soma
Kathleen & Ron Soule
Ronald W. & Mary Louise Sowa
Dr. & Mrs. Thomas J. Spalino
Mr. & Mrs. Jim Spaulding
Rob & Jennie Spenser
Phil & Theresa Spitzer
Douglas & Joanne Stacy
Mrs. Martha M. Stacy
Elizabeth Starr & Kualono Starr Harvey
Don & Jill Stein
Mr. Mitchell J. Stein
Katherine Steinberg
John & Cate Stephens
Ms. Dale Stewart & Mr. Keith Knox
Bill & Ellie Stierman
Greg & Susy Stille
Wayne Stilwell
Chris & Sherrie Stinger
Jackson Stisher
Joni & John Stone
Richard G. Stone & Patricia Robertson
Deanna Stover
Jerry & Maureen Stowell
Walt & Carol Straub
Mr. Brent Stricker & Mr. Brent Freemont
Rick & Debra Striker
Dr. Steven Strong
Norman Stubbs & Alyson Wong
Wessely & Debbi Sur
Ms. Carey Lee Sutherland
Cherry Anne Sutherland
Carol Suyama
Daren & Susan Suzuki
Mrs. Betsy Tadaki & Mrs. Donna Vierra
Larry & Barbara Tadakuma
Alvin & Yolanda Tagomori
Mike & Myriam Takamatsu
Christopher & Alicia Takitani
Tammy Takitani & Steven Lee
Mrs. Frances Takumi
Jennifer Talbott
Fred & Elaine Tamasaka
Robert & Valerie Tamura
Joe & Barbara Tanaka
Mr. Ivan Tanimoto
Marlynn Tanji
Francis & Etsuko Taomoto
Allan & Carol Tarlow
Mr. & Mrs. Henry S. Tasaka
Tim Tattersall & Errol Buntuyan
Mr. & Mrs. James Tavares
Camille Taylor & Mr. Howard Rentzer
Ms. Deborah Taylor
Dennis & Kathy Taylor
Gordon & Kay Taylor
Toni & Walter Taylor
Lance & Shari Terada
Marjorie & Zel Terlurin
Tom & Lori Tezak
Thomas & Ellen Thayer
Tim & Christine Thevenard
Patty Thibaut
Dave & Alice Thomas
Ms. Lisa Thomas
Carol Thomason
Richard & Johanna Thompson
Kathleen Thuener
Duane & Annette Ting

Herb & Kathy Toda
Colleen Todt
Brian & Faith Tokeshi
Avis & Anson Tokuhisa
Clifford & Ruth Tokumaru
Molly Tokunaga & Dayni Shimomura
Candace Tom
Gunnar Torres
Shannon Tosaki
Carole & Robyn Toy
Mr. & Mrs. Fred Toyama
Elise & Bruce Travis
Glenn & Alice Tremble
Sande & Craig Trenholme
Charles R. Treuhold & Ms. Faye Field
Dr. Mary Trotto & Pat Statenstein
Mr. & Mrs. Glenn Tsutsui
Tamiko Tucker
Natale & John Tyler
Noriyuki & Florence Ueoka
Tom & Diane Umhour
Jay Van Zwalenburg
Jeanie & Lucas Vance
Debi & Ed Varga
Dr. David & Darlene Vassos
Mr. Roland Vegas
Karen & Lane Venardos
Thomas & Nancy Vendetti
Mr. Michael Ventura
David & Harriet-Rae Vickers
Stephanie B. Viel & Ella L. Fowler
Mr. Anthony A. Vierra & Ms. Kimberly Hue Sing
Mr. Gary Vinge
Daniel Viola
Bart & Marcia Volen
Donna Wagner
Mr. Jim & Kim Wagner-Wicker
Mr. & Mrs. Clyde Wakida
Mrs. Lucia Wallace
Debra Walton & Robert Newman
Bruce Ward & Shirley Mattingly
Dean & Tad Warner
Cynthia Warner
Dr. & Mrs. Gene Wasson
Verroy Watanabe
Puck & Lois Waterhouse
Jacque Waters & Ciro Mangione
Ms. & Mr. Margaret Watkins
Mischelle Watson & Arthur Watkins
Mr. Richard Wayne
Barbara Weaver
Dale & Jacqueline Webster
William & Kimberly Weigert
Donald & Elaine Weiland
Mrs. Jill Weintraub
Jerry & Robin Welch
Walt & Jeanne Wellinger
Karl & Jeannie Wenger
David & Donna Werner
Leah & Bob Wesson
Barbara Westenberg
Bruce & Kolleen Wheeler
Bill & Tamara Whitley
Lance & Kaye Whitney
Don Wilbourn & Sally Iwankiw
Tina & Michael Wildberger
Arthur Dennis & Shari Williams
Jason & Christine Williams
Ken & Karin Williams
Ken & Martha Williams
Marcia Williams & Ronald Taylor
Paul C. & Kelly Williamson
John & Donnette-Gene Wilson
Mr. & Mrs. R. Fred Wilson
Robert & Molly Wilson
Mr. Ron Wilson
Ruth Wilson
David Wiltsey
Ray Wimberley
Peter & Deborah Hasegawa Winkler
Jenny Wisemark-Cerro
Charles & Janis Witte
David & Heather Wittenberg
Louis & Adelita Wojcik
Mr. Thomas J. Wolf
Richard S.H. Wong
A. Frederick & Carolyn Wood
Rick & Kanara Woodford
Barbara Workman
Teresa Wright & Gary Suter
Edward & Victoria Wyndram
Robert & Leonora Wyckoff
Mr. & Mrs. Paul Wysard
Ronald & Evelina Yamakawa
Stella S. Yamamoto
Eric & Iris Yamashige
Fred & Helen Yamashige
Mr. & Mrs. Carl Yanagawa
Ann Yanagi
Mien Yap & Robert Lohle
Tomie Miyajima Yasak & Susan Kanegai
Seichi & Dale Yatsushiro
Brian Yetter
Mrs. Roy R. Yonahara
Glenn & Amy Yonashiro
Robert & Linda York
Jody Yoshida

Scott Yoshida
Nelson & Karen Yoshina
Mr. & Mrs. Eric Yoshizawa
Marlene Young & Roberta Kokx
Tanis Young
Terry Young
Victoria Young
Alan & Sandra Yung
Edward & Hideko Zwick

'Ilima Family Club
Duane & Sherry Abbott
Kari Adams
Stan & Sandra Albrecht
Stephen Allred
Jennifer Almeida
Bruce & Arsinia P. Anderson
Elizabeth & Steve Anderson
Lisa Anderson
Ron & Vicki Andreassen
James & Janet Andrews
Robert C. Anger
Anonymous
Brian & Jaye Arakaki
Leslie Arakaki, D.D.S. & Charlene Matsuoka
Mr. & Mrs. David Ballaine
Johanna & Steve Baskins
Bill & Vibeke Bates
Jay Bautista & Christie Piano
Robert & Sarah Beggs
Fred & Bobbi Bell
Kathy Bento & Samantha Bento-Shea
William & Emmanuelle Betham
Edward & Helen Bigelow
John Biviano & Boonta Stone
Kent & Annetta Blette
William & Cleo Bloedon
Eva Blumenstein
Wendee Bodden
Robin Bolos
Robert Border
Jane Bordignon
Irene Bowie & Tom Stevens
Mr. & Mrs. Larry Bowman
Juenlee & Daniel Brown
William & Saeko Brown
Gina Bulosan & Michael Gabriel
Darlene & Ken Burgess
Tanya Burkel
David Burnett
Howie Burrill
James Canha
Mr. Cyrus Canzoneri
Karin Carlson & Robert Sine
Monty & Kim Carpenter
Leila Carter
Sylvia Cenzano
Charles & Linda Chandler
Mr. Ronald Chapple & Ms. Debra Waldron
Jim & Kathi Chase
Jeffrey H. Chester
Lee & Colleen Chong
Mr. John Clancy
Linda & Duane Clark
Dan & Sarah Coennen
Meryl & Bruce Cohen
Rick & Susan Colletto
Richard & Marion Conley
Mr. & Mrs. Edward Conner
Hunton & Radha Conrad
Carol Contreras
Ryan & Janna Conyers
Coral Cottage & Li Haan
Larry Courtney & Robert McLaughlin
Dave & Chris Cowan
Edward Jr. & Frances Craig
Lisa Daly & Robert Wiltz
Carolyn Dan
Beth & Stephen Daniel
Dr. David Dantes
Charene Davis
Ms. Darcy Davis
Ken & Sharon Delfeld
Mr. & Mrs. Robert Derks
David & Susan Dery
Christopher Dever
William & Sarah Devlin
Barbara Di Ferrante & Henry Popkin
Jim & Kaye Drennan
Michael Duberstein & Jeanne Mosley
Petra DuPont
Mark & Leila Elf
Dr. & Mrs. C.W. Ely, Jr.
Gene & Ian Evans
Wayne & Alene Farnier
Peter Fay
Fred & Marilu Ferguson
Jane Ferrante & John Morre
Peter Figgis
Michael & Debra Finkiewicz
Jonathan Fiske & Karen Krenz
Jim & Joan Fleming
Mr. & Mrs. Mark Fornwall
Joe & Theresa Fradin
Mr. & Mrs. Lawrence Franco
Patricia Frank & David Wilhoit
Mr. & Mrs. Robert Frias

David Fried
 Pono Fried & Uluwehi Guerrero
 Louis & April Furst
 Kathleen Furuta-Heinz
 James & Jane Gallagher
 Glenda & Ray Garcia
 Katie & Tyler Garrett
 Bob & Dru Gilroy
 Doreen & Leonard Goscola
 George Griffin
 David & Glenda Grooms
 Dorothy Guazzo
 Paul & Karen J. Gymrek
 Lana Marissa Hai
 Mr. & Mrs. Tetsuo K. Hamada
 Scott & Denise Hanley
 Ms. Anna Hanson & Mr. Peter Hanson
 Susan Harper
 Dennis & Bonnie Harris
 Carole G. Hartley & Richard Deal
 Mr. & Mrs. John Haruguchi
 Robb & Linda Haskins
 Scott Hayden
 Linda Hedden
 Mr. Jim Heine & Ms. Christine Andrews
 James N. Hepburn & Barbara de Wit
 Raymond & Sybil Herbrink, Sr.
 John Hermes & Sheri Mortimore
 Mr. & Mrs. Greg Heyd
 Hale & Kimberly Hilsabeck
 David Himle & Kiersten Robinson
 Leslie Hiraga
 Dr. & Mrs. Warren Hitz
 Robert Hoffman
 Dr. John & Diana Stephens Holman
 Mr. & Mrs. Shufflo Honda
 Robert Hoonan
 Trudy Hoppe & Chris Mithen
 Jim & Linda Howlett
 Mrs. Jill R. Hoyt
 Brian & Judy Henriques-Hubin
 Christiane Huntley
 Dr. & Mrs. William E. Iaconetti
 Gary & Kathleen Iannitello
 Koji & Sumie Ikeda
 Blendalynn & Dayle Ishikawa
 Joseph Ishikawa
 Mr. & Mrs. Isamu Iwashii
 Marie Janowiak & Thomas Metcalf
 Morris Jarnesky
 David & Silvana Jenkins
 Mr. Thomas Johnson & Ms. Laurie LeFlaur
 Bill Jones & Dyan Lyon
 Terry & Robert Joseph
 Mark & Tracey Kadowaki
 Patricia Kahahane
 Clint Kaiwi
 June Kaleponi & James Kino
 Maria Kanae & James Romias
 Kristi Kapahulehua & Junior Faapito
 Mitzie Keawekane
 John & Jo Kehoe
 James & Christine Gamiao
 Bryon & Jacqueline Kelly
 Robin Kennedy
 Michael & Barbara Kenrich
 Guy Kiaha
 Jun & Kaori Kobayashi
 Cyrus Koko
 James Krueger
 Jim & Irene Kueppers
 Ryosuke & Adel Ann Kunisawa
 Doris Lang
 Dr. George & Judy Lavenson
 Lucille & James Lawrence
 Sandra & David Lawrence
 Cynthia Leas
 Connie LeCompte
 Linda Ledger
 Barry LeFevre & Sarah Porter
 Sandra Lercari
 Erik & Hilary Leuteneker
 Alan & Sheree Levy
 Elden & Joanie Liu
 Elliot & Barbara Luke
 Susan & Joe Malaga
 Aileen & Ted Manzano
 Mark & Vicki Marchello
 Theresa & Gary Marks
 Dean & Jamie Martin
 Takashi & Eleanor Masuda
 Ross & Natalie Mather
 Wally & Mary Mayer
 Becky McCall
 Virginia & Ranald McCulloch
 Joseph & Ruth McKay
 Michael McLaughlin & John Wieland
 Judith Means
 Ms. Mary Lou Mellinger & Mr. Everette Senter
 Mr. & Mrs. Robert Menifee
 Scott Mercier
 Connie & Wayne Miller
 Kolette Miller
 Andrew & Regina Miller-Gathright
 Mr. & Mrs. Robert Miskae
 Marilyn Moyer
 Guy & Eunice Muraoka
 Maile & Josh Nagai

Mr. & Mrs. Richard L. Nelson
 Mr. & Mrs. Alvin Nishihara
 Doris Nishimura
 Ryan & Kathryn Nixon
 James & Barbara Noel
 Diane & Colly Norman
 Tracey & Roger Novy
 Marguerite Obenauf
 Karie Ociepka & Chris Candito
 Rory & Daren O'Connor
 Robert & Susan Offermann
 Rick Olson & Susan Hansen
 Dr. Kevin & Mrs. Mae Omuro
 Stanley & Frances Ort
 Jennifer Orzell & Geoffrey Murrish
 Ken & Judy Ottaviano
 Ruth & Rosanna Panopio
 Bradley Patterson
 Peter & Susan Peck
 Pete & Julie Peterson
 Yvienne Peterson
 Lesley Ann Pico-Lilio
 Dorothy M. Planck
 Barbara & Lee Potts
 Mr. & Mrs. Duane Preble
 Mary Ann & Frank Price
 Debbie Probst
 Mr. & Mrs. Bob Pure
 Marie Quindica-Cuomo
 Fel & Keri Quinsaat
 Robert & Ellen Raimo
 Joe & Marcia Raley
 Mr. & Mrs. Richard Ramirez
 Duane Ramos
 Mr. Anthony Ranken & Ms. Stephenie Karony
 Mr. Mike Resmo
 James & Janice Revells
 Fredrick & Christine Heather Reynolds
 Lucia Rhodehamel & Mark Lorenzi
 Eva Rickard
 Alice Riddle & Tom Colando
 Suzi Riley & Trevor Riley
 Beverly Ringger
 Mrs. Stella Rivers
 Mr. & Mrs. Gary Robert
 Jerry & Nancy Robles
 Lee Rochman & Patti Mendoza
 Mr. & Mrs. Douglas Rosa
 Lawrence & Krissy Rosen
 Al & Susie Rosenblum
 Brian & Lilia Ross
 Kristina & Andreas Roth
 Arlene & Don Ruffatto
 David Russell
 Jane Russomanno
 Patrick Ryan & Marilyn Murphy
 Mr. & Mrs. Clifford Saito
 Steven & Angela Sallerson
 Susan & Creighton Sato
 Jeff Scharnhost
 Art & Pam Schaupter
 Michael & Carol Schwarz
 Frederick & Sandra Schwettmann
 Tracey Ann Sevenich & Zarin Sevenich
 David Shaw & Thomas Kane
 Mr. & Mrs. Jim Shette
 Ms. Catherine Shimizu
 Henry Sims
 Mr. & Mrs. Mark Slattery
 Ronald & Lisa Sloan
 Mr. & Mrs. Stacey Sly
 Julie Small
 Craig & Deborah Smith
 Crissy Smith
 Michael & Marilyn Smith
 Alvin & Isabell Soares
 William & Donna Soares
 Richard & Jacquelyn Stahler
 Julia Staley & Michael Bare
 Diane & Alex Stanislaw
 Shan Steinmark & Melinda Rockwell
 Scott Stephens
 Jefferson & Patricia Stillwell
 Ken & Karen Stover
 Mr. & Mrs. Michael Stucklen
 Sandy & Roger Stuckmann
 Cynthia Sullivan & Joletha Griswold
 John & Anne Summers
 Stephen Sussman & Janice Roberts
 Richard Svedeman
 Michael Sze
 Elizabeth Tabisola
 Paul & Lee Ann Taddei
 Kenneth & Karen Taira
 Michael & Rae Takemoto
 Aimee Takushi
 Melanie Tavares
 Kathleen & Stephen Taylor
 Noryne & Don Taylor
 Mr. & Mrs. Rod Taylor
 Stephen Taylor & Mary Lou Newbold
 Jan & Roger Tew
 Matthew & Kelly Thayer
 Clayton Tom
 David Topper
 Debbie & Malcolm Turner
 R.J. & Jenny Twelvetrees
 William & Angela Tyler

Cary Valdez
 Linda & Eric Van Alstine
 Mr. & Mrs. Frank Vawter
 Miulan Villaren & Vanessa Speed
 Jennifer Villatora
 Derrick & Jody Vinoray
 Paul & Patricia Vinther
 Naoko & David Vitarelli
 Charles & Susan Wahl
 Mr. & Mrs. William Wainui
 Christopher & Marsha Wakley-Coy
 Mr. & Mrs. Akira Watanabe
 Jonelle Watson
 R. Larry & Pam Weaver
 Amy Webb
 Shannon & Ron West
 James & Wendy Wheeler
 Buzz & Diana Whitehead
 Lisa Widell
 Linda & Jack Wilkie
 Jack & Mary Williams
 Jaslyn Willis
 Heide Winder
 Candyce Wirt
 Mr. & Mrs. William Worcester
 Gail & James Wright
 Jeff & Charlotte Wright
 Keith & Elizabeth Wright
 Diane & Duane Wrobel
 Mr. Danny M. Yamamura
 Gary & Alma Yoshimori
 Curtis & Stephanie Young
 Lou Young
 Dr. & Mrs. Leonard Yu

'Ilima Club

Malia Abellanida
 Kate Acks
 Christian Adams
 Dawn Addleson
 Gloria Adlawan
 Jermaine Aganos
 Warren Aganos
 Christopher Agorastos
 Robin Aguilera
 Calvin Ah Loy
 Leimomi Ah Sing
 Lisa Ah Yat
 Greg Ahern
 Mr. Cliff Pali Ahue
 Ramona Aki
 Malia Akinaka
 Roz Akiona
 Yasamin R. Alarab
 Diane Alba-Means
 Mr. Albert Albrechtson III
 Carol Aldred
 Annette Alexander
 Lesley Alexander
 Shelly Alexander
 Bryon Aley
 Peter Allen
 Dr. Dwayne W. Altman
 Eifred Alvira
 Joyce Amadon
 Jeff Amaral
 Gerald Anderson
 Lynn Anderson
 Michael Anderson
 Angelika K. Andrade
 Carl Andrews
 Patriona Angulo
 Anonymous (3)
 Susan Antoku
 Mrs. Kathleen Aoki
 Lisa Apo
 Cheryl Arakawa
 Margaret Arakawa
 Dan Archer
 Kay Archer
 Dr. T. Nalani Archibeque
 Mona Lisa D. Arcinas
 Luana Argel
 Malorie Arisumi
 Linda Arint
 Bonnie Armitage
 Natalie Armstrong
 Kristi Arndt
 Catherine Arp
 Amy Arteago
 Mark Astrella
 Ms. Daryl Atay
 Francine Atwell
 Amy Austin
 Sandra Ayeroff
 Richard Ayers
 Luciana Baccarat
 Devery Bailey
 Valerie Baiocchi
 Desiree Baker
 Mark Baker
 Rose Margaret Baker
 Rosemarie Baker
 Beatrice Linda Bal
 Joellen Bal-Anderson
 Kelly Baldwin
 MJ Balubar

Neida Bangerter
 Janet Barber
 Marilyn Barbosa
 Lehua Faith Barboza
 Sharon Barclay
 Laurie Barker-Perez
 Mr. George Barrio
 Judith E. Barsness
 Edwin Bartholomew
 Suellen Barton
 James Basco
 Michael Batson
 Bruce Baum
 David Baus
 Renee Bayes
 Leona Bayless
 Alfred Beardsworth
 Scott R. Beaty
 Josepha Beauchamp
 Alana Chon
 Daniel Beck
 Robert Bedard
 Gage Beerer
 Walker Belbot
 Diane Bellisle
 Roy Bendell
 Thomas Benjamin
 Diane Bennett
 Charles Benson
 Helena Berg
 James Berg
 Chanel Bergado
 Randy Bergsrud
 Jean Berley
 Franco Berkovatz
 Nicolette Bermijo
 May Bermudez
 Cheryl Bertrand
 Malia Besaw
 Yvonne Biegel
 Ms. Evelyn Billington
 Steve Bingham
 Leif Bjornson
 Sarah Blaney
 Harold Bloomfield
 Barbara Blue
 Melissa Bluestein
 Mr. Warren Blum
 Ms. Elisabeth Blum
 Terry Boal
 Jeffrey Boardman
 Debbie Bock
 Dennis Boehlje
 Mr. Ray Bolognone
 Amy Bond
 Norman Bondy
 Jessica Bonnes
 Linda Boote
 Dr. Scott Boren
 Jennifer O. Borge
 Leona Borge
 Catherine Borgia
 Mark Bornstein
 Harold Bottomley, Jr.
 Dawn Boucher
 Susan Boucher
 Pamela Boyd
 Gertrude Braceros
 Denise Bradbury
 Susan L. Bradford
 Mrs. Linda Thornton Bradshaw
 P. A. Brady
 Sharon Brambrut
 Tama Brandenburg
 Bill Brandt
 Anne Braun
 Christine Brayton
 Donna C. Breeden
 Ken Bretana
 Tom Bridge
 Roberta Briskin
 Tara Brook
 Christina Brod
 Suzanne Brody
 Angela S. Brown
 Gerry Brown
 Jessica Brown
 Nancie Brown
 Paul D. Brown
 Mr. & Mrs. Roan Browne
 Jamie Buden
 Dana Bullock
 Mike Bunyard
 Mr. Fred Burgart
 Tammy Burgemeister
 Steven Burgess
 Jane Burton
 Barbara Cabalo
 Nan Cabatbat
 Ciana Cabato
 Ken Cabrera
 Joanne Calauastro
 Bill Caldwell
 Kahaalani Camaner
 Mrs. Charles A. Cameron
 Miranda Camp
 Regina Campisi
 Kelly Baldwin
 Jason Carbajal

Kathleen M. Carello-Thuro
 Mr. Mike Carey
 Jackie Pyle Carlin
 James Caryles
 Mira Carman
 Lawrence Carnicelli
 Michael Carroll
 Anthony Carter
 Clayton Carvalho
 Paddy Lee M. Carvalho
 Lisa Cary
 Robert A. Case
 Loretta Cashion
 Charlene Casserly
 Katie Castro
 Andrea Castroman
 Miss Renee Caton
 Ms. Neola Cavemy
 Mike Cesere
 Bonnie Chadwick
 Christina Chang
 Kini Chang
 Linda Cherry
 Richard Chiasson
 Mary Anne Chock
 Ms. Danielle Chomel
 Mark & Laurie Christiano
 Sisiri Churnbley
 Alana Chun
 Allison Chun
 Janelle Chun
 Nathan Chung
 Winnie Chung
 Mr. Andrew Church
 Sue Ciaburri
 Barbara Cipro
 Fran Clark
 Laura Clark
 Scott Clark
 Roger Clow
 Colleen Cluney
 Iris Cober
 Bob Coffey
 Bernard H. Coleman Jr.
 Patrick & Kathryn K. Collins
 Patricia Colvin
 Pat Combrisson
 Eileen Comeaux
 Frank Compan
 Kerry Compita
 Ms. Susie Conley
 Ceci Connor
 Rusty Conway
 Katie Cook
 Mary M. Cook
 Harry Coon
 Ms. Claudia Coonen
 Tamara Cooney
 Thomas Corrigan
 Kenneth Costello
 Samantha Courtenay
 Corrin Cowan
 Curtis Crabbe
 Alan Craig
 Orrin Cross
 Paul Crossman
 John & Candace Croteau
 Susana Crow
 Kevin Crowe
 Ann Cua
 David A. Cunningham
 Jun Cup Choy
 Stephen Curran
 Leon A. Custodio
 Jane L. Dade
 Richard G. Dale
 Trudy Danza
 Fred E. Davidson
 Grant Dayton
 Pierpaolo Deangellis
 Clyde Debell
 Jessica Decolte
 Darrell Dee
 Dorothy DeGusman
 Angela S. Brown
 Gloria Del Rio
 Beverly DelaCruz
 Angelita Delapena
 Lei-Ann Delatori
 Annette DeLima
 Caroline DeLima
 Colin Delos Reyes
 Brenda DeMello
 Teri Demetropoulos
 Mrs. Jocelyn Demirbag
 Heidi Denecke
 Jeanne Denton-Nelson
 Murray DePillars
 Nelson M. DeRegio
 Lisa Derose
 Kelly Desha
 Joshua DeSilva
 Lisa Deutsch
 Trish Deutsch
 Claire D'gaia
 Glenn Diamond
 Geri Dias
 Stephen R. Diaz
 Brian Dimartino

Howard Dinits
 Sandy Dioso
 Allegra DiStefano
 Susan Doane
 Helen Domer
 Rachel Domingo
 Jenn Donabedian
 Jolyann Doran
 Dr. Charles Dougherty
 Barbara Drake
 Sharon Drayer Munz
 Leigh Drewry
 Gregory Drexler
 Gail Dryer
 Sam Duboff
 Linda Dunn
 Mr. Wayne Dunn
 Rochelle Dunning
 Lani Duponte
 James Dupree
 Cheyenne Ehrlich
 Katherine Eismann
 Richard Elkins
 Robert Ellingwood
 Maggie Elliot
 Ms. Marcia Elliott
 Mrs. Christine Ellison
 Tim Ellison
 Alma En Paz
 Johanna Epp
 Diane Epstein
 Judy Epstein
 Katherine Erdman
 Lynn Erfer
 Sue Erickson
 Bill Ernst
 Jackie Esquia
 Mr. Lance Estes
 Andres Estrada
 Lloyd Ettinger
 Ms. Shirley Evangelista
 Beverly Evans
 Barbara Evert
 Ms. Denny Eymard
 Erika Fabian
 Johnny Fagan
 Thomas Fahsholtz
 Melanie Falcon
 Kim Falconer
 Lydia A. Faletoi
 Margo Fancher
 David A. Farber
 Bonnie Farr
 Mrs. Mary Faustine
 Daniel Feteira
 Lori Feteira
 Lorian Feteira
 Theresa Felgate
 Rowena Felipe
 Diane Fell
 Jamie L. Ferge
 Ikuko Ferguson
 Barbara Fernandez
 Jim Fernandez
 Natalie Fernandez
 Carmen Ferri
 Kim Ferriera
 Edward Field
 Suzanne Fields
 Gordon Finney
 Annie Fischer
 Kathi Fitch
 Mr. Dennis Fitzpatrick
 Christine Fletcher
 Rochelle Fletcher
 Lynn Flores
 Ms. Kathy Flowers
 Ms. Virginia Floyd
 Mike Foley
 Michael & Susan Foley
 Barbara Fong
 Suzanne Forbes
 Ely Forrest
 Garry Forsberg
 Matt Foster
 Jody Fousek
 Barry Frankel
 Ms. Sandy Frewer
 Luana Fukumoto
 Patrick Fukumoto
 Becky Fuller
 Elizabeth Fulton
 Sharlee Fun
 Colleen Furukawa
 Ericka Gaastra
 Andrew Gabel
 Randeae Gabriele
 Ms. Barbara Gach
 Bonnie Gaddo
 Lei Galang
 Christine Gale
 Leslie Gallagher
 Lisa Gallagher
 Denyse Galvez
 Steven Gampoina
 Jon Garcia

continued on page 24

Annual Donors

continued from page 23

Robert Garcia
Mr. William Garcia
Euripides Garner
Gloria Garrett
Joseph V. Gartlan
Paul Genova
Don Gerbig
Cheryl Gerrish
Maria Gerry
Kathleen Giambalvo
Lee Anne Gianola
Mike Gieber
Cynthia Giebink
John Gilbert
Stephen Gimma
Donald Giordano
Leslie Gise
Nicole Glassen
Tom Glavor
Julie Glick
Gregory Gluz
Loraie Godwin
Ms. Anne Goff
Birgitte Golden
Ms. Jill Goldman
Joel Goldman
Todd Goldner
Elizabeth Goldsmith
David Goldsmith
Stephen Goldsmith
Nancy Golly
George M. Gomes
Maile Gomes
Sharene Gomes
Lorraine Gomez
Marcos Gomez
Jerry Goodwin
Barbara J. Goss
Patricia Gould
Kim Grady
Connie Graham
Linda Gravit
Judy Gray
Suzanne Greenberg
Sophie Greeno
Debra Gregory
Mary Gridley
Heather Griffith
Gigi Grimes
Lollie Groth
Chris Groves
Paula Guanzon
Marci Guendel
Carol Guerrero
Susan Guerrero
Maureen Guirgone
Ryan Gullikson
Roy Gurat
Jo Gurule
Calvin Gushiken
Jon Gushiken
Barbara Gustafson
Guy Gustafson
Joy Gutierrez
Sunny Gutierrez
Judina Haas
Frank Hackett
Chris Haigh
Stephen Haines
Jay M. Hall
Shoichi Hamai, Jr.
Victoria Hamilton
Nikki Jackson
Michele Handley
Linda Ion Hangartner
Kelley Hannah
Mr. & Mrs. Jeffrey Hansen
Kathy Hansen
Peter Hansen
William Hanshaw
Kinee Hanson
Lisa Haole
Barry Harfacher
Ainahou Harold
Barbara Harper
Mr. Jerry Harris
Katherine Harris
Rocke & Marcia Harris
Ruth Harrison
Clarence Hart
Mrs. Linne Hartman
Hilary Harts
Clare Harvey
John Harvey
Julie Hatch
Nona Haupu
Maile Hayashida
Audrey Hayes
Rene Haynes
Warren M. Haynes
Katie Hazen
Janine S. Hearne
Brooke Helgeson
Jody Heller

Jenny Hellsen
Ms. Barbara Helm
Mikahala Helm
Roger Hendricks
Jan Hendrix
Leanne Hennis
Julie Henson
Marjorie Hernandez
Susan Hernandez
Scott Herndon
Kaye Hesburn
Monique Heyndrickx
Mr. Juvenal Hidalgo
Erin Higa
Ms. Julie Higa
Melissa A. Higginbotham
Joan Higgins
Bruce Highland
Anne Hill
Michelle Hillen
Janis & Colin Hiranago
Marilynn Hirashima
Derek Ho
Hiram Ho
Mary Lou Hoenig
Christina Hoffman
Mrs. Tracy Hofmann
Mr. Matthew Hofrichter
Ivor Hoglund
Glenn & Ngoc Hokama
Prudence K. Hokoana-
Gormley
Beth Holiday
Marylyn Holland
Betty Hollingshead
Julie Holmes
Kanani Holokai
Hokulani Holt-Padilla
Gary Hooe
Mr. Paul Hooper
Sabrina Hoppe
Aubrey Hord & John White
Jennifer Hori
Ian Horswill
Ms. Diane Hosaka
Cherylyn Houpo
Joanne Houssian
Fay Hovey
Broox Hoyt
Rudy & Kahulu Huber/Run-
ner's Paradise
Harriet Huff
Jon Hughes
Karen Hughes
Lorraine Human
Kenneth Hunt
Mary Hutto
William Iao
Linda Idoine
Brian Ige
Scott Ige
Joan Igoe
Clifford Ii
Arlene M. Ingraham
Sally Irwin
Carol Isaak
Dennis Iyo
Donya Izbicki
Mr. Lance P. Jaber
Jan Jacintho
Allen D. Jackson
Nikki Jackson
Duaine James
Brandon James
Miss Kalei Jaramillo
Linda Jarman
Dianne E. Jarois
Cindy Jenkins
Linda Jenkins
Paul Jenkins
Joshua Jerman
Linda Jerome
Guy Jette
Amy Johnson
Benjamin O. Johnson
Jim & Jo Anne Johnson
Michael Johnson
Ruth Johnson
Susan Johnson
Susan Johnes
Patti Laser
Dr. Bill Latter
Winona Lau Hee
Francine Lavilla
April Lawrence
Kim Lazo
Michelle Leabman
Francine Lee-Dombecky
Kay Leeson
Marc Lefebvre
Laura Legsay
Aimee Lemieux
Govinda Leopold
Tamara Lester

Ms. Ginger Elizabeth Kaila
Leona M. Kaiser-Joaquin
Doreen Kaito
Chanel Kaiwi
Benjamin Kalama
Steven O. Kalanasy
Kiana Kam
David Kama
Shawn Kamai
Yasuji Kamijo
Amy Kamikawa
Jamie Kane
Linda Kanoo
Herminia L. Kanoho
Netta Kanoho
Scott Karli
Mr. Jerome Karzen
Mrs. Mary Kasper
Stuart Kastan
Roy Kato
Deni Kawauchi
Kaleo Kealoa
Jasmine Kear
Con & Barbara Keating
Maria Keau
Evy Keys
Adia Kehdy
Joslin Kehdy
Patricia E. Kelley
Chris Kelly
Diane Kennedy
Amy L.P. Kennett
Calina Kent
Ronald Kent
Dr. David Kern
Tiffany Kesaji-Murakamo
Keith Kessler
Maria Keyser
Joycelyn Kiaha
Mr. Mark Kibbee
Ginny Kiick
Phillip T. Kikukawa
Ben Kikuyama
Lee Killelt
Gina Kim
Geru Kimoto
Sheryl Kimura
Osnei Kinasz
Janet M. King
Jeffrey King
Vicki Kinkella
Kathleen Kinney
Julia Kirkland
Keith Kirschbraun
Amy Kleiman
Kathleen Klett
Alaina M. Kluk
Claudia Knickerbocker
Lynette Knox
Blaine Kobayashi
Carl Kobayashi D.D.S.
Ms. Margie Koff
Liane Koga
Rinko Kogure
Michi-Ann Kohama
Jane Kohler
Clint Komoda
Arthur Kontura
Karen Kopec
Arnold Kotler
Gloria Kraftsow
Douglas Kramp
Mr. Roger Krehl
Ms. Deborah Kremins
Barry Kristel
Debbie Kruger
Eli Ku
Deanne Kualaau
Perry Kunin
Stacy Kunkel
Kimberly Kushi
Paul Kutsunai
Joan Kysar
Michelle Kytlica
Julie LaCroix
Gretchen Ladley
Suzanne Landin
Gary D. Landis
Richard Landry
Jody Lane
Robert Lang
Mare Langlois
Connie Lappin
Tana Larson
Patti Laser
Dr. Bill Latter
Winona Lau Hee
Francine Lavilla
April Lawrence
Kim Lazo
Michelle Leabman
Francine Lee-Dombecky
Kay Leeson
Marc Lefebvre
Laura Legsay
Aimee Lemieux
Govinda Leopold
Tamara Lester

Mr. Stephen Levine
Dr. Jacob Liberman
Debra Licht
Barry Lienert
George & Celeste Ligmial
Bob Lijstrand
MengShiDa Semoia Lin
Pei Ling Lin
Erin Lindbergh
Charles Linden
Katherine Lindsey
Kevin Lioen
Bill Little
Malia Liu
Lucia Livoti
Sharon Loando-Monro
Wayne Lockwood
Laurie Logergren
Ken Longenecker
John Longmire
Gloreen Loper
Cynthia Lopez
Amy Lord
Kathleen Lordan
Donna Lorenz
Mrs. Leslie Louis
Ken Loveland
Mr. Robert Lovell
Patricia Lucas
Richard Lucas
Ryan Luckey
Linda Lunde
Caitlin D. Lynch
John Lynn
Kathy MacGlashan
Mr. Steve Mack
Laura Mackey
Shelley Maddigan
Mr. Leslie Maeda
The Honorable Glenn A. Mahler
Malia Maldonado
Kathryn Maloney
Constance R. Malott
JoJo Maltese
Derin Mamud
Valeria Mandall
Steven Mangum
Fern Markgraf
Bonnie Marko
Jeanne Marlowe
Ms. Suzette Marlowe
Bonnie Marsh
Mrs. Tina Marshall
Christine Martin
Lisa Martin
Robert Martin
Sisi Martin
Dwight Martinez
Melanie Martinez
Mrs. Margaret Marz
Candace Mason
Leila Mason
Bob & Michele Mason
William Massarotti
Mr. Charles Massey
Mrs. Carol Massie
Christi Masters
Robert Mastrolanni
Gabrielle Masuda
Mark Masuda
Sylvia L. Mata
Nick Matichyn
Sharyn Matin
Jason Matsui
Patrice M. Matsumoto
Monica Matzek
James Mayer
Leinaala Maynard
Ms. Connie McAboy
Linda McAlpine
Koren McCall
Jeff McCammack
Linda McCarthy
Victoria McCarty
Jodi McClave
Ms. Mary Ann McCloskey
David McConnell
Robert McDowell
Kimberly McEvoy
Mr. Paul McGee
Jaci McKay
Jean McKinnon
Bonnie McLennaghan
Jedediah McLin
James David McManus
Mr. Robert McMillin, Jr.
Chandler McMurry
Kirk McNabb
Joni Meadows
Nicole Meadows
Abdel Mebed
Anna Mae Medeiros
Joseph Medeiros
Melinda Mendes
Roberta Mendez
David Mendonca
Sirena Mendoza
David Menzies

John Messersmith
Scott Metcalfe
Mary J. Metz
Susy Meyer
Tom Michaels
Stacey Middleton
Christy Miles
Jean Jeanette Millholland
Cindy Milla
Leslie Millen
Ms. Barbara L. Miller
Brian L. Miller
Chad Miller
Monica Miller
Penny Miller
Tina Miller
Jennifer Mills
Jean Millsaps
Marvin Mitchell
Mitch Mitchell
Eric M. Miyajima
Joyce Miyamoto
Amy Miyashiro
Donald Miyashiro
Marc Moessner
Melea Moir
Wendell Molina
Carmel Molzhon
Laura Monaco
Inge Monteith
Bonnie Moore
David Moragne
Nancy Morales
Ms. Bonnie Morgan
Jerry Morgan
Ms. Laura Moriarty
Curt Morimoto
Andre Morisette
Bernadette Morreira
Sheri Morrison
Marcia Morse
Maria Moskwa
Karen Motooka
Iris Mountcastle
Izumi Mouri
Ms. Melinda Mower
Kristen Mowrey
Glen Moyer
David Muckenhirn
Heather Mueller
Christine Muff
Mark Mullins
Gary Murai
Robert Murphy
Thomas Murphy
Steve Murray
Evelyn Musser
Dwight Nacua
Jenny Nagatori
Floyd Nagoshi
Dennis Nakagawa
Michelle Nakagawa
Wilma Nakamura
Irene Nakashima
Carla Nakata
Hilda Nakayama
Mr. Dana Nance
Xavier Naranjo
Amro Nassar
Cindy Natividad
Joel Navarro
Debra Neal
Ms. Elaine Nelson
Frances Nelson
Melinda Neuwirth
Dana Newinsky
Nadine Newlight
Vicki Newman
Barbara Newton
Dianna Nielsen
Elise Nielsen
Javin Nielsen
Kathleen Nielsen
Logan Nielsen
Cory Nigbur
Nick Nikhilananda
Glenda Nishida
Yasuko Nishida
Mr. Larry Nishihira
Michelle Nisly
Mr. Andrew Nissenbaum
Christina I. Noah
Mr. John Noguchi
Todd Nolan
Bob Nooney
Ms. Adrian Norris
Blaise Noto
George Nunes
Arthur Obrero
Katherine Odononou
Kerry Ogawa
Brian Okuda
Jill E. Okura
Chris Oldenburg
Kevin Oleary
Anthony Omer
Sandra Onaka
John O'Neill

Patricia Orason
Jerry Orban
Midori Oriksa
Patty Oriot
Chuck Ormsby
Jo-ann Ortega
Marlene Ortiz
Darrell Orwig
Claron Oshiro
Gary Oshiro
Larry Oshiro
Ron Oshiro
Ricky Otsuka
Ms. Lana Oura
Lisa Owen
Stacy Pahukoa
Sharon Paley
Richard Palmeira
Anna-Maria Palomino
Lina Pangelinan
Bonnie Papadopoulos
Hilary Parker
Kendall Parker
Roberta Parker
Sandy Parker
Denise Parks
Jody Partyka
Geoffrey Pass
John Patterson
Deborah S. Patton
Judith Paul
Graham Peake
Lana Peragine
Tamara Perkins
Wendy Perry
Joelle Perz
Betty Peschke
Ms. Linda Petersen
Douglas Peterson
Karen A. Peterson
Karen J. Peterson
Ms. Pamela Peterson
Margaret Phanes
Kimberly Phillips
Ms. Paula Phillips
Gail Pickholz
Ms. Kathleen A. Pierceall
Shari Ann Pierson
Matthew Pietsch
Curtis Pilgrin
Jerry Pillar
Barbara Pino
Allen Pins
Virginia Pipe
Ann Pirsch
John Platiro
Nancy Plenty
Anthony & Natasha Plitt
Brian Plunkett
Nancy Polfenbarger
Stephanie Pola
Jennifer Polich
Pamela Pollard
Nalani Pollock
Antonio Pompillio
Jaclyn Ponce
Dale R. Pontis
Lee Poston
Barbara Popowitz
Laurie Pottish
Kirk Pourmanafzadeh
Kona Powell
Susan Powers
Deborah Pozin
Stephen Prager
Carol A. Prait
Lori Praver
Stephen Praver
Emilie Preston
Harry Prince
Mae Pung
Helen Purdy
William Pursley
Mr. John Pye
Chris Quarre
Ms. Kiyoko Quiggle
Victor Quitan
Mildred Rader
Gail Raikes
Jana Ramia
Kathy Ramos
Paula Rathburn
Paul Ratterman
Alexandra B. Rayburn
Cynthia Razo
Nora Rea
I. Rita Redden
Gabrielle Redfeart
Ms. Deanna Reece
Jeri Reed
Rand Reger
Kathryn Regier
Monica Revells
Ms. Mary Revercomb
Barbara A. Rice
Mrs. Renee Richardson
Jennifer Richter
Fred Rickert

Karen Riddick
Denise Riggs
Trudi Ringsby
Sharon Ringsven
Gary Ritchie
Robin Ritchie
Marlene Ritts
Joyce Roark
Ms. Karen Robbins
Rosemary Robbins
Deborah Robinson
David Rockett
Pearl Rockett & Camille Rockett
Joanne M. Roddis
Stephen Rodrigues
Marsha Rogers
Mr. Robert Rohde
Mrs. Toni Rojas
William C. Rolph
John Romain
Cynthia Roman
Nichole Romias
Ruth Ronning
Mr. Mark Rooney
Duane Rosa
Steve Rose
Blue Rosen
Stephanie Rosen
Kathy Ross
Melissa Ross
Dr. Richard J. Roth
Mark Rudd
Debra Ruiz
Carl Rumpff
Eileen Ryckewaert
Kristy Sabin
Daphne Sadler
Brenda Yospe
Renee Saito
Linda Sajdak
Allen Sakamoto
Paul Sakugawa
George Salamack
Cerise Salomon
Steven Samudio
Garry Samuels
Diane Sandate
Amy Sanders
Derek Sanderson
Christiane Santoro
Holly L. Santos
Randy Sarrow
Mr. Randall Sasaki
Ms. Mary Ann T. Savella
Deborah Sawyer
R. Lavenda Schaff
Robert Schaffer
Lynne Schildmeyer
Allen Schipper
Resch Schirmer
Bob Schlumberger
Bernie Schmidt
Ayres Schmitt
Gordon Schmuhl
Mary Lu Schnars
Dane Schneider
Deborah Schneider
Mr. William Schnitzer
Mr. Jeffrey Schultz
Phillip Schultz
Jack Schulz
Pamela Schulz
Mark Schuster
Nancy Scibora
Connie Scott
Laura Scott
Roxanne Scott
Stephanie Seefeldt
Shelley Seideman
Kariana Seiler
Ms. Sharyl Ann Seino
Keiko Seki
Mr. Mark Sentf
Noreen Sereno
Ron & Sherry Serle
Anna Severson
Tom Sewell
Geri Shapiro
Ms. Marci Shapiro
Mark Shaw
Dr. Virginia R. Shaw
Ms. Sandra Shawhan
Judith A. Sheller
Diane E. Shepherd
Lois Sheppard
Kathryn Sherman
Shannon Shibley
John Shiffler
Anne Shigetla-Koch
Ms. Debbie Shimabukuro
Dianne Shimizu
Ryoji Shiozaki
Barbara Shiroma
Colleen Shishido
Daniel Shupack
Gay Sibonga
Sherry Siisbee
Genevieve Simpson

Tina Skjerseth
Paula Skrotzki
Cindy Smarcan
Amy Smith
Mrs. Antoinette Smith
Brenda Smith
Gary Smith
Jason C. Smith
Jim Smith
Ms. Kathleen Smith
Kriston Smith
Roxanna Smith
Shannon Smith
Sharol Smith
G. Williams Snipes
Anne Mari Snyder
Wanda Sobel
Ivan Sombelon
Roberta Souza
Wendy Souza
Jori Spencer
Mr. Mark Spencer
Sarah Spencer
Christine Spradlin
Randy St Germain
Catherine St. John
Ron St. John
Darcy Stables
Mr. William Staley
Emma Statton
Ruthann Stegall
Andrew J. Stehl
Heather Steiner
James Stephen
Gayle L. Stephens
Lorna Stewart
Roxanne Stewart
Colin Stillwagen
Jennifer Stolpe
Marc Stone
Michelle K. Stone
Mrs. Patricia Strzyn
Patricia Stuart
Carol Suckow
Bertram Sugimoto
Cheryl Sullivan
Stephen Sullivan
Mr. Barry Sultano
Brooke Sumner-Nielsen
Ellen Sundook
Jodi Sussman
Celia C. Ueoka Suzuki
Martha Suzuki
Sharon Suzuki
Ellen Sway
Jennifer Sykes
Mark Szyska
Mr. Arthur Tabanao
Alma Takahashi
Miles Takakura
Carol P. Takashima
Michael Takehara
Eileen Taketa
Jan M. Tam Ho
Mika Tamakawa
Wayne Tamaki
Jodi Tamanaha
Amy K. Tamashiro-Costa
Aimee Lei Tanaka
Melissa Tanji
Amy Tatik
Howard Tavares
Ms. Sarah Tavares
J. Christine Taylor
Richard Taylor
Elise Teagle
Pam Teal
Keith Teboul
Mr. Donald Tedesco
Linda Tengan
Gail Terada
Sylvia Tharp
Ms. Marie Thoma
Anna Thomas
Bradley Thomas
Christopher Thomas
Karen Thomas
Linda Thomas
Susan E. Thomas
Pam Thompson
Blair Thorndike
David Thorngood
Erick Tjom
Tom Tobin
Derek Toda
Richard Todd
Daryl Tokunaga
Jessica Tolman
Beverly Tom
Jennifer Jo Tomita
Elizabeth Tomoso
Mrs. W.J.A. Toole
Harriet Toyama
Barbara Trecker
Ricarda Treffer
Melinda Trenary
Joelene Trenholm
Sheri Lyn Trinidad

Taylor Tripodi
Nancy Trippel
Cynthia Trisolini
Jan Trost
Thomas Trotter
John Turbeville
Melvin Turner
Tania Turner
Joseph Twarowski
Jacqueline Tyler
Venus S. Ubias
Michiko Ueno-Herr
Marcy Ulep-Souza
K. Marie Ullman-Orestano
Guy Umetsu
Larry Uyeda
Frank Vaiuso
Edith Van Hoose
Robert Van Wagoner
Mrs. Julie Vandervoort
Barbara Vandewark
Elizabeth Vannatta
Lisa Varde
Audrey Ventimiglia
Mr. & Mrs. Arthur Vento
Mrs. Svetlana Vernik
L. Melissa Vicar
Paulyn Victorino
Jeffrey S. Vierra
Mark Vieth
Juanes Villa
Denise Villanova
Zach Visaya
Ms. Lea Voss
Kelly Vough
Mary D. Wagner
Dr. Elaine M. Waldow
Ann Marie Walker
Angela Walsh
Mr. David Ward
Douglas Warne
Stephen Wasilewski
Aerie Waters
David Watersun
Erik Watson
Stephen Watson
Pamela Webb
Marguerite Webber-Beck
Annette Weber
Jennifer Weber
Josie Webster
Leslie Weed
Mrs. Colleen Weimer
Judith Weitz
Linda Weller
Ms. Tamara Wells
Susan Wentworth
Jeffrey Werner
June M. Werner
Barbara Wheeler
Gina R. Wheelwright
Mark Whinery
Larry Whitford
Andy Widholm
Janis Wiesneth
Kenneth Wild
Dr. Gary Wilkins
Danny Williams
Deborah Williams
Jane Williams
Mrs. Jeanie Williams
Ms. Mary Kathryn Williams
Kim Willis
Jay Wilson
Stephanie Winters
Mrs. Christine Wong
Dean Wong
Marie Wong
Priya Wong
Tod Wong
Greg Wood
Paul Wood
Yumiko Wood
Sharon & Terry Woodall
Jazlyn Woods
Lorraine Woolford
Chris Wurtele
Susan Wyche
Gary Yabuta
Mrs. Susan Yadao
Sumiko Yamagishi
Ms. Priscilla Yamamura
Jeffrey Yamaniishi
Mrs. Eleanor Yanagi
Val Yanagida
Dennis Yankee
Aimee Yatsushiro
Tina Yerzy
Hye Yim
Annette Yoda
Jolynne Yokouchi
Marlene Yokoyama
Charlene Yoshimura
Ms. Alyce M. Yoshino
Robert Yoshino
Anne Yoshioka
Shiho You
David Young

Roxanne Yu
Mr. Robert Flint
Tammy Zacharias
Mr. Stephen Zack
Renee Zaima
Niloo Zaratan
January Zeh
Barbara Zimmerman

'Ilima Club Kūpuna/Students

Shalandra Abbey
Millard Allgood
Mrs. Nancy M. Alueta
Etsuko Andersen
Wes E. Anderson
Richard & Barbara Angus
Anonymous (2)
Roselle Armitage
Ethel Asato
Adah Askew
Katherine Ayers
Doug Baar
Gabrielle Baca
Byron Baker
David & Samara Balfour
Donna Barata
Alfred Barcomb
Joanna Barnes
Phil Barrett
Bob Beaudry
Gini & Jay Beaufait
Betty Beggs
Mrs. Judy Beisner
Ellen Belconis
Janice Bell
Mary Jo Bell
Aaron Bement
Mrs. Marty-Jean Bender
Dr. Robert Berger
Norm Bezane
Ms. Numia Blackwell
Connie Bleil
Eleanor Bloom
Jerry F. Bormann
Nelson & Ann Boteilho
Chad Bottiger
Charles Bower
Mr. Sheldon Braidman
Ms. Patricia Brint
Linda Brown
John & Ada Brydges
Jane Cambouris
Odette Carothers
Ms. Linda Carr
Joan Carson
Mr. Frank Cesario
Mr. Earl F. Chandler
Stephanie Cherin
Ms. Grale Chong
Beatrice Chong Kee
Teresa Chu
Barbara Clark
Beverly Clark
Edwin Clarke
Harriet & Bob Collopy
Mrs. Lenore Conklin
Margaret & Allen Conner
Patricia Cook
Ann Coopersmith
Harriet B. Cost
Ruth Costa
John & Carole Coté
Micko Crowell
Sun Dancer
Mary P. Daoust
Jan Dapitan
Tina Dart
Vince Davi
Tom & Sharon Davies-Reid
Sharon Deardeuff
Henry DeCoite
Ruth Deichman
Bessie Demello
Donald Demers
Diane Desiderio
Carol Dick
John Dietler
Carroll Dillon
Mr. Marconi Dioso
Toshi & Mabel Domae
Ms. Eleanor Dudley
Mrs. Juanita A. Duldulao
Coila I. Eade
Mr. Lamont Ecker
Frank Ehrhardt
Grace T. Endo
Rosa Enriques
Gary Ephraim
Charles & Lois Epstein
Judith A. Everett
Martin Fallick
Susie Feldt
Mrs. Myrna L. Fernandez
Ann Fielding
Frank Firestone

Steven Kruy
Tsuneyuki & Kikuyo Kubota
Kit Kurz
Barbara LaMarca
Lawrence & Mary Ann Lambert
David Langdon
James & Diana Lanigan
Paul Larigee
Richard H. Larson
Barbara Lauridsen
Robert Layman
Donald Lee
Keoni Lee
Mr. & Mrs. Sam LeFore
Diana Leone
Richard Leong
Gilbert Levitt
Phyllis Levy
James Likes
Jim Lose
Lou & Katherine Lovejoy
Ruisa Luan
Mary Ann Lundquist
Michael & Myrna Macias
Mr. Richard Makino
Mr. Robert Marcy
Yonah Marks
Mr. Lee Marteney
Martha Martin
Ms. Martha E. Martin
Patricia H. Masumoto
Lynne Mateaki
Joe Mateo
Edith Mathis
Masayo O. Matsui
George & Katsuko Matsuo
John Matthams
Jaquelynn Mauvais
Donna McClure
Ryan & Sharon S. McKeon
Rosalie McPherson
Mrs. Rose D. Mooradian
Lee Moore
Mrs. Katherine Moriyasu
Richard Morse
Tom Mullon
Mrs. Dorothy T. Murakami
Jean Murakami
Leora Murakami
Pat & Patsy Murray
Flo Nakama
Tokiko Nakamura
Robert W. Nelson
Shirley Nelson
Bonnie Newman
Janet Nienaber
Mr. & Mrs. Edward Nishihara Sr.
Ms. Alberta Nobu
Carolyn Nuyen
Mrs. Joan Opitz
Mrs. Joan Oram
Stephen Oshty
Alicia Otis
Ms. Lorraine Otsu
Mr. & Mrs. Tadashi Otsu
Bonnie Owen
Ronald Owen
Myrna Parscal
Sylvia Pastor
Leighton Paul
Mr. Richard Platek
Carroll Prejean
Dr. Phillip & Mary Priebe
Mr. Willford Pulawa Sr.
Richard Rademacher
Ardis & Dave Records
Helen A. Reed
Sherry Remez
Mr. John S. Rippey
Patricia Roach
Judith Robeck
Janet Robinson
Sandra Rogers
Sara E. Rose
Louise Ross
Leah Roth
David Russell
Ms. Libby Russo
Edgar Sabeth
Ms. Winifred Saki
Terry & Kinue Sakaitani
Ruby K. Sakurada
Joan Samuels
Maria Scafidi
Dr. Robert Schaffhauser
Beverly Schifferling
Violet Schindler
Mrs. Marian Schmid
Anna Carol Seki

Mrs. Elaine Shapiro
Mrs. Bernice Shibanoo
Casey Shim
Miss Momoye Shimada
Yoshie Shoji
Rita Silva
Cheyanna Simmons
Barbara Sinclair
Koana Smith
Richard L. Smith
Victoria Smith
Mara Snaith
Nancy Snow
Ms. Kathryn Snyder
Warren E. Snyder
Helen Sobaje
David & Gene Standiford
Laura Standow
Mrs. Maxine Stewart
Dan Stockhammer
Armie Stuhr
Ms. Marion Suda
David Sunderland
Mary Sweet
Russell Taft
Lillian M. Takabayashi
Lillian Takaki
Mrs. Edith Tan
Mrs. Alexander Tarpoff
P. Arlene Tavares
Edward Tengan
George M. Tengan
Mrs. Anne W. Thaw
Antonia Thiessen
Barbara Timm
Dorothy Tolliver
John Toussaint
Marilyn Tur
David & Hana Travis
Theodore A. Trouerbach
Mr. Paul A. Twellker
Marjorie Tyler
Mrs. Harriet Van Steen
John Vogel
Mr. Vic Voss
Thelma T. Waki
Judy Waters
Dr. Shirley Weeks
Muriel Y. Wehrman
Irene Wertheim
Marsha L. White
Ken & Ruth Williams
Audrey Kent Wilson
Mrs. Carolyn Wolf
Brenda Wong
Larry Wong
Mr. Charles Wood
Frank Wooding
Lois Wylie
Ms. Mildred Yagi
Patsy Yamashita
Ms. Babbie Yonkers
Mrs. Haruyo Yoshioka
Constance Young
Suzanne Young
Jerome Zamarin

Donors to "Completing Pundy's Dream" – Stage 3 Construction of the Generations Campaign

Leo & Virginia Agcolicol
Anonymous (3)
Edward & Sally Baldwin
The Boeing Company
Richard & Fátima Cameron
Anne Carter
County of Maui
John & Linda Decker
Eugene & Ruth Freedman
Dan Stockhammer
Armie Stuhr
Ms. Marion Suda
David Sunderland
Mary Sweet
Russell Taft
Lillian M. Takabayashi
Lillian Takaki
Mrs. Edith Tan
Mrs. Alexander Tarpoff
P. Arlene Tavares
Edward Tengan
George M. Tengan
Mrs. Anne W. Thaw
Antonia Thiessen
Barbara Timm
Dorothy Tolliver
John Toussaint
Marilyn Tur
David & Hana Travis
Theodore A. Trouerbach
Mr. Paul A. Twellker
Marjorie Tyler
Mrs. Harriet Van Steen
John Vogel
Mr. Vic Voss
Thelma T. Waki
Judy Waters
Dr. Shirley Weeks
Muriel Y. Wehrman
Irene Wertheim
Marsha L. White
Ken & Ruth Williams
Audrey Kent Wilson
Mrs. Carolyn Wolf
Brenda Wong
Larry Wong
Mr. Charles Wood
Frank Wooding
Lois Wylie
Ms. Mildred Yagi
Patsy Yamashita
Ms. Babbie Yonkers
Mrs. Haruyo Yoshioka
Constance Young
Suzanne Young
Jerome Zamarin

Kalo Club Philip & Evelyn Brown Jack Esker & Gene Thompson Auriol & Ed Flavell Sandy Fox Carolyn Schaefer Gray Mr. & Mrs. Frank Hook Dorvin & Betty Leis Richard North Rose Royce Jitsuo Yoshimori

In honor of Ethelyn & Jackson Stishers' 50th Wedding Anniversary Mrs. Mette W. Lyons

In honor of John & Linda Deckers' 50th Anniversary Stephen Sussman & Janice Roberts

In memory of Nonie & Bill Brundage Alpaugh Foundation

In memory of Richard (Dick) Ford Robert & Sandra Connor EF Properties, L.C.

In memory of James Wheeler Mr. Robert J. & Dr. Mary Lou Morgado

Join the Kalo Club with a Legacy Gift to the MACC



By including the Maui Arts & Cultural Center in your long range financial and estate plans, you help ensure that the MACC is here for our entire Maui community for generations to come. A legacy gift can come in different shapes and sizes, to fit whatever your situation might be. They include bequests through wills or living trusts, beneficiary designations on retirement plans and life insurance policies, retained life estate in your residence, gift annuities and trusts that provide income for life, and more. For more information on how to include the MACC in your estate plans and become a member of the Kalo Club, please call Lisa Varde, Development Director at 808-243-4236 or email lisa@mauiarts.org

Join today.

Celebrate creativity, community and discovery! Become an annual donor of the Maui Arts & Cultural Center and enjoy benefits the benefits immediately... and all year long!



'Ilima

\$40 Individual /\$70 Family
\$25 Kupuna & Students

- Advance ticket buying privileges on selected performances (up to two tickets for selected shows)*
- Subscription to and recognition in Centerpiece
- Annual donor card
- 10% discount on up to two tickets to selected events
- 10% discount on selected MACC gift items
- Invitations to exhibit openings
- Monthly mailings of "shows" calendar



'Ōhi'a

\$110

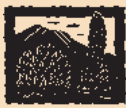
- All 'Ilima benefits plus...
- Additional donor card
- Waived phone fee on ticket orders
- 10% discount and advance ticket buying privileges on up to four tickets to selected events
- Benefits at O'ahu's Contemporary Museum and Hawai'i Island's Volcano Art Center



Kukui

\$275
(\$270 tax deductible)

- All 'Ōhi'a benefits plus...
- Donors behind-the-scenes tour (please allow advance notice)
- Beverage mug with club logo
- 10% discount and advance ticket buying privileges on up to six tickets to selected events*



Silversword

\$550
(\$480 tax deductible)

- All Kukui benefits plus...
- Waived parking fees for events requiring paid parking
- Invitation-only exhibit walk-through with an artist or curator
- One complimentary 4-hour use of a meeting room
- 10% discount and advance ticket buying privileges on up to eight tickets to selected events*



Maile

\$1,250
(\$1,140 tax deductible)

- All Silversword benefits plus...
- Designated parking for A&B Amphitheater events
- Priority ticket handling and access to Box Seats**
- Invitation to annual Maile Reception



Naupaka

\$2,500
(\$2,385 tax deductible)

- All Maile benefits plus...
- Reserved table in Yokouchi Founders' Court for pre-show activities
- Charging privileges at the bar before and during intermission at Castle Theater shows
- Set of original notecards by a featured artist



Koa

\$5,000
(\$4,805 tax deductible)

- All Naupaka benefits plus...
- Catalog from one Schaefer International Gallery exhibit
- Reserved parking for premier events
- Invitation to exclusive Chairman's Annual Dinner



Sandalwood

\$10,000
(\$9,785 tax deductible)

- All Koa benefits plus...
- Two personalized reserved parking passes
- Reserved parking for all events
- Personalized benefits package
- Bar service in Box Seats Ante-room (when you have purchased Box Seat tickets)



Kauila

\$25,000
(\$22,405 tax deductible)

- All Sandalwood benefits plus...
- Reception or backstage greeting with a visiting artist
- Full-page ad in the house program for one performance (for your company or the charity of your choice)
- Complimentary theater seat plaque
- Two complimentary round trip limo rides (maximum of 8 people) between your home and the MACC with Arthur's Limousine Service, and 25% off all future transportation services with Arthur's.

* Ticket limits apply for selected shows ** Based on donor level and date ticket request is received

Yes!

Please enroll; me today for 12 months of exciting events and benefits!

'Ilima: Individual Family Student / Kupuna
 'Ōhi'a Kukui Silversword Maile
 Naupaka Koa Sandalwood Kauila

DONOR INFORMATION

Name _____
(as you would want it to appear in publications)

Mailing Address _____

City/State/Zip _____

Phone: Home _____ Work _____

E-mail _____

DONOR CARD(S)

If \$70 or greater, individual name on second card:

Ms./Miss/Mrs./Mr. _____

PAYMENT OPTIONS

I have enclosed a check for \$ _____
made payable to "Maui Arts & Cultural Center."

Please charge \$ _____ to my:

Mastercard Discover Visa American Express

Number _____ Exp. Date _____

Signature _____

Name as on card: _____

Please charge my credit card to make equal payments

of \$ _____ in each of the following months: (circle up to four)

JAN FEB MAR APR MAY JUNE JULY AUG SEPT OCT NOV DEC

- I wish to waive tangible benefits for full tax deduction.
- I have included the MACC in my estate planning.

Please mail completed order form to:

Maui Arts & Cultural Center, One Cameron Way, Kahului HI 96732

For more information on annual donor benefits, contact the Development Department at 243-4237 or 243-4225.

Linoleum block prints seen here and in cover masthead background by Big Island artist Dietrich Varez

Maui Arts & Cultural Center Board of Directors

Chairman: James J. C. Haynes
Vice Chairman: Susan R. Graham
Treasurer: Jack Naiditch
Secretary: Travis O. Thompson
Chair Elect: Judy Siracusa

Leo Agcolico	Tamara Horcajo
Edward Baldwin	Jim Judge
John Baldwin	Betty Leis
Zadoc W. Brown, Jr.	Dorvin D. Leis
Richard F. Cameron	Helen MacArthur
Anne Carter	Michael Moore
Louis Cole	Robert J. Morgado
Maggie Cole	Wendy Rice Peterson
Carolyn Schaefer Gray	Margaret I. Raffin
Kathy Halpin	Clyde Sakamoto
Honey Bun Haynes	Thomas Steinhauer
Alexa Higashi	Anthony Takitani
Stephen Holaday	

Founding Chairman: Masaru "Pundy" Yokouchi
Directors Emeritus: Janet Allan, Judy Bisgard, Frank Blackwell Sr., Gary Salenger
Ex-officio: J. Kalani English, Shan S. Tsutsui

Staff

President & CEO: Karen A. Fischer
Executive Assistant: Marcia Perreira
Receptionist: Malia Liu
Executive Vice President & General Manager: Arthur Vento
Asst. to GM/ Artist's Services: Kahulu Maluo-Huber
Cultural Programs Director: Hókūlani Holt
Cultural Programs Assistant: Pali Ahue
Director, Programs & Administration: Colleen Furukawa
Grants Manager: Leimomi Ah Sing
Education Director: Susana Browne
Education Coordinator: Kariana Seiler
Gallery Director: Darrell Orwig
Exhibits Program Manager: Neida Bangerter
Events Director: Candace Croteau
Events Coordinator: Jody Yoshida
House Manager: Dean Wong
Volunteer Coordinator: Naomi Tamura
Security Manager: Nick Krau
Director, Corporate Sales & Special Events: Toni Rojas
Food & Beverage Co-Managers: Luana Argel & Lisa Ha'ole
Director of Development: Lisa Varde
Annual Giving Manager: Kathy MacGlashan
Donor Relations Manager: Birgitte Golden
Development Assistant: Beverly Delacruz
Development Clerk: Luana Fukumoto
Marketing Director: Barbara Trecker
Marketing Manager: Corinne Domingo
Box Office Manager: Jason Carbajal
Customer Service Manager: Joanne Calaustra
Box Office Staff: Lindy Ah-Sam, Jane Chenoweth, Todd Richter
Director of Finance: Amro Nassar
Staff Accountant: Leila Mason
Facility Engineer: Michael Foley
Facility Maintenance: Anna Mae Medeiros
Facility Crew: Linda Dunn, Dennis Nakagawa, Curtis Piligrin, Jim Smith, Johna Sanchez, Lawrence Seaton, Zach Visaya
Technical Director: Rusty Conway
Production Assistant: Sharon Munz
Lighting Director: Mark Astrella
Audio Engineer: Steve Burgess
Stage Manager: Amy Lord
Systems Manager: Leo Nikora
Systems & Applications Specialist: Tom Kennis

More income at retirement?



6.75%*

Single Premium Deferred Annuity

*Current effective annual interest rate for 10-year Interest Rate Guarantee Period based on premium of \$50,000 as of 11/01/2008. Rate includes a 1.00% bonus in the first year. At the end of the first year, the interest rate is reduced by 1.00% and is guaranteed for the remainder of the guarantee period.



Skip Barraco, Agent
 77 Hookele Street, Suite 101
 Kahului, HI 96732
 Bus: 808-873-6717
www.insuremaui.com

A tax benefit today, plus retirement income you can't outlive. Let's talk about the **FUTURE INCOME PLUS** deferred annuity from State Farm.®

statefarm.com®

Lower rates apply for lower premium. Rate subject to change without notice. Actual rate credited will be rate in effect on the day premium is received. After 10 years, a new guaranteed interest rate, not less than 3%, and Interest Rate Guarantee Period may apply. Market Value Adjustment, if applicable, will decrease or increase values if withdrawals are made prior to the end of the Interest Rate Guarantee Period. Surrender Charge may apply in first 9 years. No Market Value Adjustment and no Surrender Charge will be applied to any death benefit payable. Consult your State Farm agent for policy details and your tax or legal advisor for specific advice. Policy Series: 03040 & 03090 in all states except MT, NY, OR, PA, TX, & WI; 03090 in MT, and A03040 & A03090 in WI.

State Farm Life Insurance Company, Bloomington, IL (Not licensed in MA, NY, and WI)
 State Farm Life and Accident Assurance Company, Bloomington, IL (Licensed in NY and WI).

P082009 11/01/2008

Not FDIC Insured • No Bank Guarantee • May Lose Value

Accepting New Clients

General Dermatology Cosmetic • Laser • Skin Cancer



Dr. Ly

- Acne Clinic • Rashes
- Skin Cancer
- Liposuction
- Body Sculpting
- Botox • Restylane
- Tattoo & Hair Removal
- Eyelid Surgery

877-6526

89 Hookele St., #101, Kahului

For savings, testimonials, before & after pictures & price match guaranty visit:
www.aloha-dermatology.com

Behind the Scenes...



Fleetwood Blues Band

Skip and Judy Locke got a chance to shake hands with drummer Mick Fleetwood on the evening of a special benefit concert for MACC with the Mick Fleetwood Blues Band September 26. The wildly successful evening also helped serve as a launching pad for the start of the MFBB's European tour in October!

Over 400 Moloka'i residents crowded onto the Moloka'i Library to watch Te Vaka perform a free community show as part of MACC's "Artists in the Community" program! (that's 6% of the population ... and the largest community show on Moloka'i for us yet!)



Te Vaka

Award-winning L.A.-based Lula Washington Dance Theatre presented two shows for Maui students in the Castle Theater for school children October 14. Almost 1,000 elementary- and middle-schoolers learned about African-American history and dance ...and creative expression in general! The program brought the kids to their feet! The troupe also conducted classes with Maui Academy of Performing Arts, then 27 MAPA kids performed alongside in the public program October 16!

...and off the Stage



Lula Washington



Styx

Meeting the band STYX backstage just before they rocked the Castle Theater stage in a powerhouse performance October 10: Chimen Podrat and Marnie Meuser.



Kool & The Gang

Yee-oww! The Maui audience jumped up and danced through the show to Celebrate with the guys from Funkytown ...a.k.a. Kool & The Gang! After the concert in the Castle Theater, several of our donors got together for a meet-n-greet, including Rebecca Fajardo Godfrey of the *Fil-Am Observer* and friends!

*Consider yourself
invited!*

10th ANNUAL

FirstLight:
Academy Screenings on Maui

THE HOLIDAY SEASON'S BIGGEST PARTY!

December 17 - 23, 26 - 30
& January 3 - 4

FILM PREMIERES & SPECIAL SCREENINGS

featuring

Benicio del Toro, Michelle Williams, Penelope Cruz, Kate Winslet,
Leonardo DiCaprio, Sean Penn, Brad Pitt, Matt Dillon,
Angela Bassett, Ethan Hawke, Mark Ruffalo, Dustin Hoffman,
Emma Thompson, Emile Hirsch, Josh Brolin, Clint Eastwood,
Will Smith, Rosario Dawson, Kate Beckinsale, Nicole Kidman,
Hugh Jackman, Viggo Mortensen, Angelina Jolie, Mickey Rourke,
Marisa Tomei, Robert De Niro, Evan Rachel Wood, Meryl Streep,
Philip Seymour Hoffman, Amy Adams, Cate Blanchett,
Liev Schreiber, Daniel Craig, Frank Langella, Michael Sheen
and Kevin Bacon.

For complete schedule, film synopsis, previews & ticket/pass prices, visit:

www.MauiFilmFestival.com

≡ MARCO'S ≡ GRILL & DELI

"Just minutes from the Center"



Breakfast, Lunch & Dinner
Dine in or Carry out
Featuring Italian Specialties
Cocktail Lounge

Think Italian

Open seven days, 7:30 AM to 10:00 PM
444 Hana Highway, Suite M, Kahului, Maui, Hawaii

877-4446